

FGFR-4 Rabbit pAb

CatalogNo: YT5715

Key Features

Host Species

- Rabbit

Reactivity

- Human, Mouse, Rat

Applications

- WB, ELISA

MW

- 85kD (Observed)

Isotype

- IgG

Storage

Storage* -15°C to -25°C/1 year (Do not lower than -25°C)

Formulation Liquid in PBS containing 50% glycerol, 0.5% BSA and 0.02% sodium azide.

Recommended Dilution Ratios

WB 1:500-1:2000

ELISA 1:10000

Not yet tested in other applications.

Basic Information

Clonality Polyclonal

Immunogen Information

Immunogen The antiserum was produced against synthesized peptide derived from the Internal region of human FGFR4. AA range:91-140

Specificity FGFR-4 Polyclonal Antibody detects endogenous levels of FGFR-4 protein.

Target Information

Gene name FGFR4

Protein Name Fibroblast growth factor receptor 4

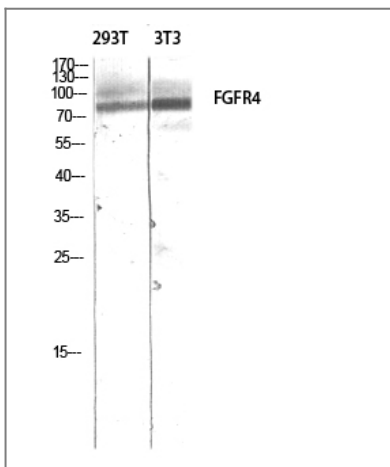
Organism	Gene ID	UniProt ID
Human	2264;	P22455;
Mouse	14186;	Q03142;
Rat	25114;	Q498D6;

Cellular Localization Cell membrane; Single-pass type I membrane protein. Endosome. Endoplasmic reticulum. Internalized from the cell membrane to recycling endosomes , and from there back to the cell membrane.; [Isoform 2]: Secreted.; [Isoform 3]: Cytoplasm .

Tissue specificity Expressed in gastrointestinal epithelial cells , pancreas , and gastric and pancreatic cancer cell lines.

Function Catalytic activity:ATP + a [protein]-L-tyrosine = ADP + a [protein]-L-tyrosine phosphate. ,Function:Receptor for acidic fibroblast growth factor. Does not bind to basic fibroblast growth factor. Binds FGF19. ,PTM:Glycosylated (By similarity) . Phosphorylated on tyrosine residue (By similarity) . Phosphorylation requires the presence of a functional (phosphorylated) FGFR1 and not necessarily by means of FGFR heterodimerization. ,similarity:Belongs to the protein kinase superfamily. Tyr protein kinase family. ,similarity:Belongs to the protein kinase superfamily. Tyr protein kinase family. Fibroblast growth factor receptor subfamily. ,similarity:Contains 1 protein kinase domain. ,similarity:Contains 3 Ig-like C2-type (immunoglobulin-like) domains. ,subcellular location:Isoform 2 may be secreted. ,subunit:Interacts with KLB. ,tissue specificity:Expressed in gastrointestinal epithelial cells , pancreas , and gastric and pancreatic cancer cell lines. ,

Validation Data



Western blot analysis of 293T 3T3 lysis using FGFR4 antibody. Antibody was diluted at 1:500. Secondary antibody (catalog#:RS0002) was diluted at 1:20000

Contact information

Orders: order.cn@immunoway.com
Support: support.cn@immunoway.com
Telephone: 400-8787-807(China)
Website: <http://www.immunoway.com.cn>
Address: 2200 Ringwood Ave San Jose, CA 95131 USA



Please scan the QR code
to access additional
product information:
FGFR-4 Rabbit pAb

For Research Use Only. Not for Use in Diagnostic Procedures.

[Antibody](#) | [ELISA Kits](#) | [Protein](#) | [Reagents](#)