

CD88 Rabbit pAb

CatalogNo: YT5710

| Key Features

Host Species

- Rabbit

Reactivity

- Human,Rat,Mouse,

Applications

- WB,ELISA

MW

- 39kD (Observed)

Isotype

- IgG

| Recommended Dilution Ratios

WB 1:500-1:2000

ELISA 1:10000

Not yet tested in other applications.

| Storage

Storage* -15°C to -25°C/1 year(Do not lower than -25°C)

Formulation Liquid in PBS containing 50% glycerol, 0.5% BSA and 0.02% sodium azide.

| Basic Information

Clonality Polyclonal

| Immunogen Information

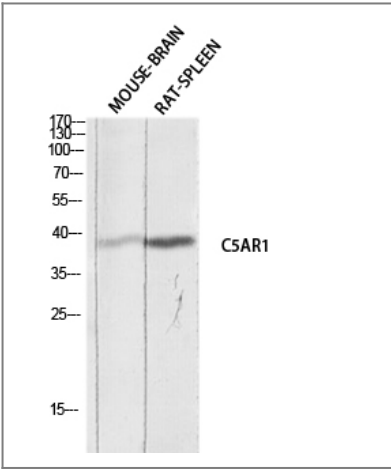
Immunogen The antiserum was produced against synthesized peptide derived from the N-terminal region of human C5AR1. AA range:1-50

Specificity CD88 Polyclonal Antibody detects endogenous levels of CD88 protein.

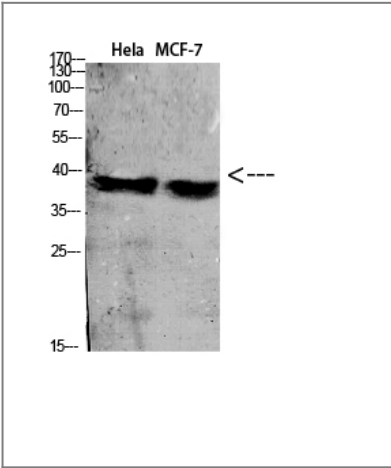
| Target Information

Gene name	C5AR1		
Protein Name	C5a anaphylatoxin chemotactic receptor		
	Organism	Gene ID	UniProt ID
	Human	728;	P21730;
	Mouse		P30993;
Cellular Localization	Cell membrane ; Multi-pass membrane protein . Cytoplasmic vesicle . Phosphorylated C5aR colocalizes with ARRB1 and ARRB2 in cytoplasmic vesicles. .		
Tissue specificity	Brain,		
Function	Function:Receptor for the chemotactic and inflammatory peptide anaphylatoxin C5a. This receptor stimulates chemotaxis, granule enzyme release and superoxide anion production.,PTM:Sulfation plays a critical role in the association of the receptor with C5a, but no significant role in the ability of the receptor to transduce a signal and mobilize calcium in response to a small peptide agonist.,similarity:Belongs to the G-protein coupled receptor 1 family.,		

| Validation Data



Western blot analysis of MOUSE-BRAIN RAT-SPLEEN lysis using C5AR1 antibody. Antibody was diluted at 1:1000. Secondary antibody(catalog#:RS0002) was diluted at 1:20000



Western Blot analysis of various cells using Antibody diluted at 1:1000. Secondary antibody(catalog#:RS0002) was diluted at 1:20000

| Contact information

Orders: order.cn@immunoway.com
Support: support.cn@immunoway.com
Telephone: 400-8787-807(China)
Website: <http://www.immunoway.com.cn>
Address: 2200 Ringwood Ave San Jose, CA 95131 USA



Please scan the QR code
to access additional
product information:
CD88 Rabbit pAb

For Research Use Only. Not for Use in Diagnostic Procedures.

[Antibody](#) | [ELISA Kits](#) | [Protein](#) | [Reagents](#)