

CD269 Rabbit pAb

CatalogNo: YT5687

| Key Features

Host Species

- Rabbit

Reactivity

- Human, Mouse

Applications

- WB, ELISA

MW

- 20kD (Observed)

Isotype

- IgG

| Recommended Dilution Ratios

WB 1:500-1:2000

ELISA 1:10000

Not yet tested in other applications.

| Storage

Storage*

-15°C to -25°C/1 year (Do not lower than -25°C)

Formulation

Liquid in PBS containing 50% glycerol, 0.5% BSA and 0.02% sodium azide.

| Basic Information

Clonality

Polyclonal

| Immunogen Information

Immunogen

Synthesized peptide derived from the Internal region of human CD269.

Specificity

CD269 Polyclonal Antibody detects endogenous levels of CD269 protein.

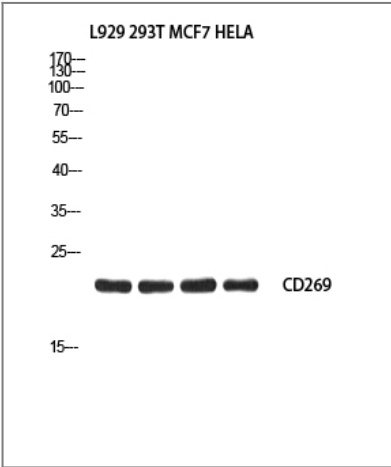
| Target Information

Gene name

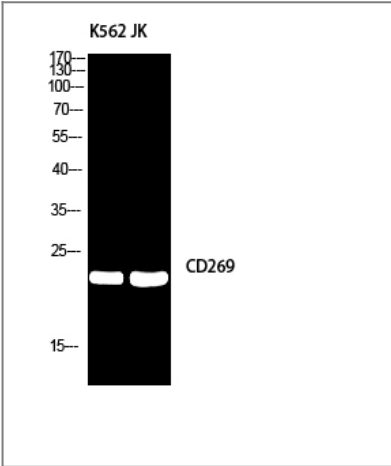
TNFRSF17 BCM BCMA

Protein Name	Tumor necrosis factor receptor superfamily member 17		
	Organism	Gene ID	UniProt ID
	Human	608;	Q02223;
	Mouse		Q88472;
Cellular Localization	Cell membrane; Single-pass type III membrane protein. Endomembrane system; Single-pass type III membrane protein. Perinuclear Golgi-like structures.		
Tissue specificity	Expressed in mature B-cells, but not in T-cells or monocytes.		
Function	Disease:A chromosomal aberration involving TNFRSF17 is found in a form of T-cell acute lymphoblastic leukemia (T-ALL). Translocation t(4;16)(q26;p13) with IL2.,Function:Receptor for TNFSF13B/BLyS/BAFF and TNFSF13/APRIL. Promotes B-cell survival and plays a role in the regulation of humoral immunity. Activates NF-kappa-B and JNK.,similarity:Contains 1 TNFR-Cys repeat.,subcellular location:Perinuclear Golgi-like structures.,subunit:Associates with TRAF1, TRAF2, TRAF3, TRAF5 and TRAF6.,tissue specificity:Expressed in mature B-cells, but not in T-cells or monocytes.,		

| Validation Data



Western blot analysis of L929 293T MCF7 HELA using CD269 antibody. Antibody was diluted at 1:2000. Secondary antibody(catalog#:RS0002) was diluted at 1:20000



Western blot analysis of K562/JK using CD269 antibody. Antibody was diluted at 1:2000. Secondary antibody(catalog#:RS0002) was diluted at 1:20000

| Contact information

Orders: order.cn@immunoway.com
Support: support.cn@immunoway.com
Telephone: 400-8787-807(China)
Website: <http://www.immunoway.com.cn>
Address: 2200 Ringwood Ave San Jose, CA 95131 USA



Please scan the QR code
to access additional
product information:
CD269 Rabbit pAb

For Research Use Only. Not for Use in Diagnostic Procedures.

[Antibody](#) | [ELISA Kits](#) | [Protein](#) | [Reagents](#)