

TRMT11 Rabbit pAb

CatalogNo: YT5682

Key Features

Host Species

- Rabbit

Reactivity

- Human,Rat,Mouse,

Applications

- WB,ELISA

MW

- 53kD (Observed)

Isotype

- IgG

Recommended Dilution Ratios

WB 1:500-1:2000

ELISA 1:10000

Not yet tested in other applications.

Storage

Storage*

-15°C to -25°C/1 year(Do not lower than -25°C)

Formulation

Liquid in PBS containing 50% glycerol, 0.5% BSA and 0.02% sodium azide.

Basic Information

Clonality

Polyclonal

Immunogen Information

Immunogen

Synthesized peptide derived from the C-terminal region of human TRMT11.

Specificity

TRMT11 Polyclonal Antibody detects endogenous levels of TRMT11 protein.

Target Information

Gene name

TRMT11

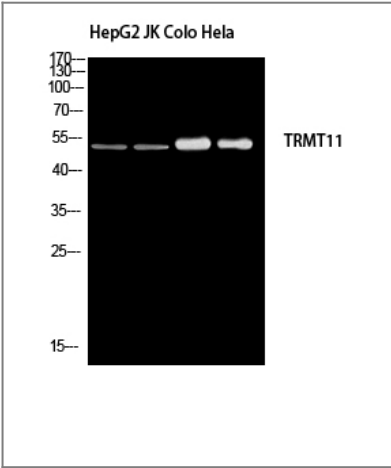
Protein Name tRNA

Organism	Gene ID	UniProt ID
Human	60487 ;	Q7Z4G4 ;
Mouse		Q9CWH5 ;

Tissue specificity Hematopoietic stem cell,Liver,

Function:Function:Catalytic subunit of an S-adenosyl-L-methionine-dependent tRNA methyltransferase complex that mediates the methylation of the guanosine nucleotide at position 10 (m2G10) in tRNAs.,similarity:Belongs to the methyltransferase superfamily.,

Validation Data



Western blot analysis of HepG2 JK Colo HeLa using TRMT11 antibody. Secondary antibody(catalog#:RS0002) was diluted at 1:20000

Contact information

Orders: order.cn@immunoway.com
Support: support.cn@immunoway.com
Telephone: 400-8787-807(China)
Website: http://www.immunoway.com.cn
Address: 2200 Ringwood Ave San Jose, CA 95131 USA



Please scan the QR code to access additional product information:
TRMT11 Rabbit pAb