

ADAMTS-2 Rabbit pAb

CatalogNo: YT5671

Key Features

Host Species

- Rabbit

Reactivity

- Human, Mouse

Applications

- WB, ELISA

MW

- 100kD (Observed)

Isotype

- IgG

Recommended Dilution Ratios

WB 1:500-1:2000

ELISA 1:10000

Not yet tested in other applications.

Storage

Storage* -15°C to -25°C/1 year (Do not lower than -25°C)

Formulation Liquid in PBS containing 50% glycerol, 0.5% BSA and 0.02% sodium azide.

Basic Information

Clonality Polyclonal

Immunogen Information

Immunogen Synthesized peptide derived from ADAMTS-2 . at AA range: 1140-1220

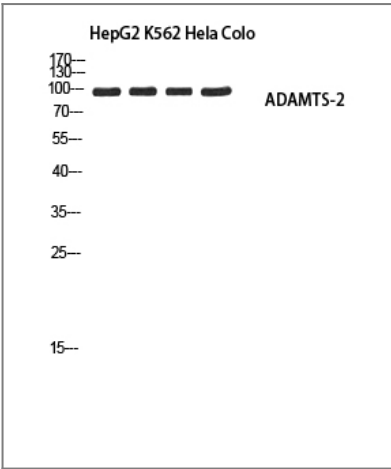
Specificity ADAMTS-2 Polyclonal Antibody detects endogenous levels of ADAMTS-2 protein.

Target Information

Gene name ADAMTS2

| | | | |
|------------------------------|---|-----------------------|-------------------------|
| Protein Name | A disintegrin and metalloproteinase with thrombospondin motifs 2 | | |
| | Organism | Gene ID | UniProt ID |
| | Human | 9509; | Q95450; |
| | Mouse | | Q8C9W3; |
| Cellular Localization | Secreted, extracellular space, extracellular matrix . | | |
| Tissue specificity | Expressed at high level in skin, bone, tendon and aorta and at low levels in thymus and brain. | | |
| Function | <p>Catalytic activity: Cleaves the N-propeptide of collagen chain alpha-1(I) at Pro-[Gln and of alpha-1(II) and alpha-2(I) at Ala-[Gln., Caution: Has sometimes been referred to as ADAMTS3., cofactor: Binds 1 zinc ion per subunit., Disease: Defects in ADAMTS2 are the cause of Ehlers-Danlos syndrome type 7C (EDS7C) [MIM:225410]. EDS is a connective tissue disorder characterized by hyperextensible skin, atrophic cutaneous scars due to tissue fragility and joint hyperlaxity. EDS7C is marked by extremely fragile tissues, hyperextensible skin and easy bruising. Facial skin contains numerous folds, as in the cutis laxa syndrome., Domain: The spacer domain and the TSP type-1 domains are important for a tight interaction with the extracellular matrix., Function: Cleaves the propeptides of type I and II collagen prior to fibril assembly. Does not act on type III collagen. May also play a role in development that is independent of its role in collagen biosynthesis., PTM: The precursor is cleaved by a furin endopeptidase., similarity: Contains 1 disintegrin domain., similarity: Contains 1 peptidase M12B domain., similarity: Contains 1 PLAC domain., similarity: Contains 4 TSP type-1 domains., subunit: May belong to a multimeric complex. Binds specifically to collagen type XIV., tissue specificity: Expressed at high level in skin, bone, tendon and aorta and at low levels in thymus and brain.,</p> | | |

| Validation Data



| Contact information

Orders: order.cn@immunoway.com
Support: support.cn@immunoway.com
Telephone: 400-8787-807(China)
Website: <http://www.immunoway.com.cn>
Address: 2200 Ringwood Ave San Jose, CA 95131 USA



Please scan the QR code
to access additional
product information:
**ADAMTS-2 Rabbit
pAb**

For Research Use Only. Not for Use in Diagnostic Procedures.

[Antibody](#) | [ELISA Kits](#) | [Protein](#) | [Reagents](#)