

## Topo III $\alpha$ Rabbit pAb

CatalogNo: YT5666

### | Key Features

#### Host Species

- Rabbit

#### Reactivity

- Human, Mouse

#### Applications

- WB, ELISA

#### MW

- 115kD (Observed)

#### Isotype

- IgG

### | Recommended Dilution Ratios

**WB 1:500-1:2000**

**ELISA 1:10000**

**Not yet tested in other applications.**

### | Storage

#### Storage\*

-15°C to -25°C/1 year (Do not lower than -25°C)

#### Formulation

Liquid in PBS containing 50% glycerol, 0.5% BSA and 0.02% sodium azide.

### | Basic Information

#### Clonality

Polyclonal

### | Immunogen Information

#### Immunogen

Synthesized peptide derived from Topo III $\alpha$  . at AA range: 350-430

#### Specificity

Topo III $\alpha$  Polyclonal Antibody detects endogenous levels of Topo III $\alpha$  protein.

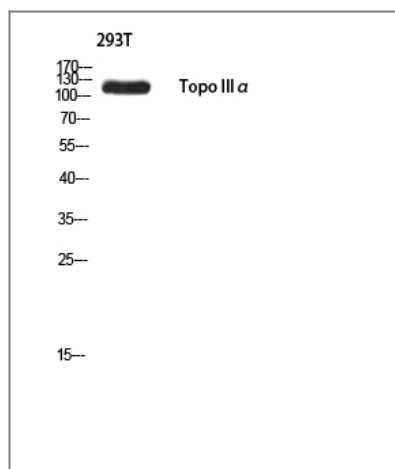
### | Target Information

#### Gene name

TOP3A

<b>Protein Name</b>	DNA topoisomerase 3-alpha		
	<b>Organism</b>	<b>Gene ID</b>	<b>UniProt ID</b>
	Human	<a href="#">7156;</a>	<a href="#">Q13472;</a>
	Mouse	<a href="#">21975;</a>	<a href="#">O70157;</a>
<b>Cellular Localization</b>	Mitochondrion matrix .		
<b>Tissue specificity</b>	High expression is found in testis, heart, skeletal muscle and pancreas.		
<b>Function</b>	Catalytic activity:ATP-independent breakage of single-stranded DNA, followed by passage and rejoining.,Function:Reduces the number of supercoils in a highly negatively supercoiled DNA. Essential component of the RMI complex, a complex that plays an important role in the processing of homologous recombination intermediates to limit DNA crossover formation in cells.,similarity:Belongs to the prokaryotic type I/III topoisomerase family.,subunit:Directly interacts with BLM and RMI1. Component of the RMI complex, containing at least TOP3A, RMI1 and RMI2. The RMI complex interacts with BLM.,tissue specificity:High expression is found in testis, heart, skeletal muscle and pancreas.,		

## Validation Data



Western blot analysis of 293T using Topo III $\alpha$  antibody. Antibody was diluted at 1:500. Secondary antibody(catalog#:RS0002) was diluted at 1:20000 cells nucleus extracted by Minute TM Cytoplasmic and Nuclear Fractionation kit (SC-003, Invent biotech, MN, USA).

## Contact information

Orders: order.cn@immunoway.com  
 Support: support.cn@immunoway.com  
 Telephone: 400-8787-807(China)  
 Website: <http://www.immunoway.com.cn>  
 Address: 2200 Ringwood Ave San Jose, CA 95131 USA



Please scan the QR code to access additional product information:  
**Topo III $\alpha$  Rabbit pAb**

