

Lefty Rabbit pAb

CatalogNo: YT5647

Key Features

Host Species

- Rabbit

Reactivity

- Human, Mouse

Applications

- WB, IHC

MW

- 40kD (Observed)

Isotype

- IgG

Recommended Dilution Ratios

WB 1:500-2000

IHC 1:50-300

Storage

Storage*

-15°C to -25°C/1 year (Do not lower than -25°C)

Formulation

Liquid in PBS containing 50% glycerol, 0.5% BSA and 0.02% sodium azide.

Basic Information

Clonality

Polyclonal

Immunogen Information

Immunogen

The antiserum was produced against synthesized peptide derived from the C-terminal region of human LEFTY1/LEFTY2. AA range: 301-350

Specificity

Lefty Polyclonal Antibody detects endogenous levels of Lefty protein.

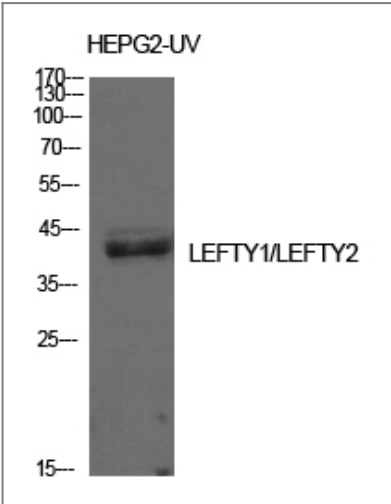
Target Information

Gene name

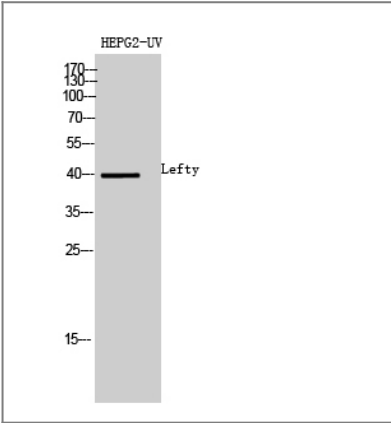
LEFTY1/LEFTY2

Protein Name	Left-right determination factor 1/Left-right determination factor 2		
	Organism	Gene ID	UniProt ID
	Human	10637 ; 7044 ;	O75610 ; O00292 ;
	Mouse	13590 ; 320202 ;	
Cellular Localization	Secreted.		
Tissue specificity	Colon,Pancreas,Spleen,Teratocarcinoma,		
Function	Function:Required for left-right axis determination as a regulator of LEFTY2 and NODAL.,PTM:The processing of the protein may also occur at the second R-X-X-R site located at AA 132-135. Processing appears to be regulated in a cell-type specific manner.,similarity:Belongs to the TGF-beta family.,		

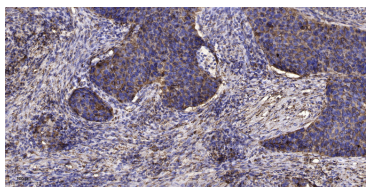
| Validation Data



Western Blot analysis of HepG2-UV cells using Lefty Polyclonal Antibody. Antibody was diluted at 1:500. Secondary antibody(catalog#:RS0002) was diluted at 1:20000



Western Blot analysis of HEPG2-UV cells using Lefty Polyclonal Antibody diluted at 1:500. Secondary antibody(catalog#:RS0002) was diluted at 1:20000



Immunohistochemical analysis of paraffin-embedded human Squamous cell carcinoma of lung. 1, Antibody was diluted at 1:200(4° overnight). 2, Tris-EDTA,pH9.0 was used for antigen retrieval. 3,Secondary antibody was diluted at 1:200(room temperature, 45min).

| Contact information

Orders: order.cn@immunoway.com
Support: support.cn@immunoway.com
Telephone: 400-8787-807(China)
Website: <http://www.immunoway.com.cn>
Address: 2200 Ringwood Ave San Jose, CA 95131 USA



Please scan the QR code
to access additional
product information:

Lefty Rabbit pAb

For Research Use Only. Not for Use in Diagnostic Procedures.

[Antibody](#) | [ELISA Kits](#) | [Protein](#) | [Reagents](#)