

CD232 Rabbit pAb

CatalogNo: YT5627

| Key Features

Host Species

- Rabbit

Reactivity

- Human, Mouse, Rat

Applications

- WB, ELISA

MW

- 175kD (Observed)

Isotype

- IgG

| Recommended Dilution Ratios

WB 1:500-1:2000

ELISA 1:10000

Not yet tested in other applications.

| Storage

Storage*

-15°C to -25°C/1 year (Do not lower than -25°C)

Formulation

Liquid in PBS containing 50% glycerol, 0.5% BSA and 0.02% sodium azide.

| Basic Information

Clonality

Polyclonal

| Immunogen Information

Immunogen

The antiserum was produced against synthesized peptide derived from the Internal region of human PLXNC1. AA range: 811-860

Specificity

CD232 Polyclonal Antibody detects endogenous levels of CD232 protein.

| Target Information

Gene name PLXNC1

Protein Name Plexin-C1

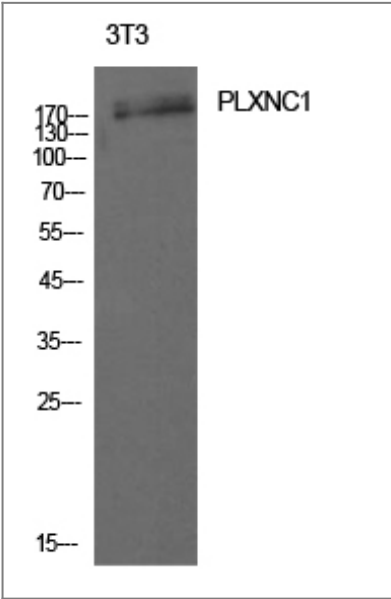
Organism	Gene ID	UniProt ID
Human	10154 ;	O60486 ;
Mouse	54712 ;	Q9QZC2 ;

Cellular Localization Membrane ; Single-pass type I membrane protein .

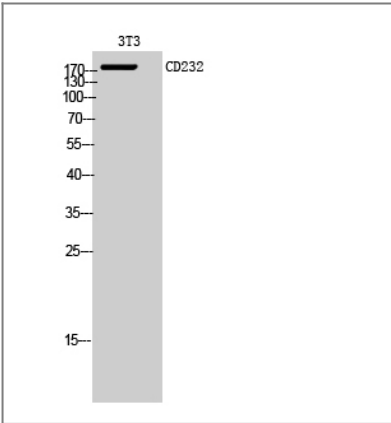
Tissue specificity Detected in heart, brain, lung, spleen and placenta.

Function Function:Receptor for vaccinia virus semaphorin A39R and for herpesvirus Sema protein. Binding of viral semaphorins triggers cellular responses leading to the rearrangement of the cytoskeleton and to secretion of IL6 and IL8.,PTM:N-glycosylated.,similarity:Belongs to the plexin family.,similarity:Contains 1 Sema domain.,tissue specificity:Detected in heart, brain, lung, spleen and placenta.,

Validation Data



Western Blot analysis of 3T3 cells using CD232 Polyclonal Antibody. Antibody was diluted at 1:1000. Secondary antibody(catalog#:RS0002) was diluted at 1:20000



Western Blot analysis of 3T3 cells using CD232 Polyclonal Antibody diluted at 1:1000. Secondary antibody(catalog#:RS0002) was diluted at 1:20000

| Contact information

Orders: order.cn@immunoway.com
Support: support.cn@immunoway.com
Telephone: 400-8787-807(China)
Website: <http://www.immunoway.com.cn>
Address: 2200 Ringwood Ave San Jose, CA 95131 USA



Please scan the QR code
to access additional
product information:
CD232 Rabbit pAb

For Research Use Only. Not for Use in Diagnostic Procedures.

[Antibody](#) | [ELISA Kits](#) | [Protein](#) | [Reagents](#)