

## Ox40L Rabbit pAb

CatalogNo: YT5620

### | Key Features

#### Host Species

- Rabbit

#### Reactivity

- Human, Mouse, Rat

#### Applications

- WB, IHC, IF, ELISA

#### MW

- 21kD (Observed)

#### Isotype

- IgG

### | Recommended Dilution Ratios

**WB 1:500-1:2000**

**IHC: 1:100-1:300**

**IF 1:100-1:300**

**ELISA 1:10000**

**Not yet tested in other applications.**

### | Storage

**Storage\*** -15°C to -25°C/1 year (Do not lower than -25°C)

**Formulation** Liquid in PBS containing 50% glycerol, 0.5% BSA and 0.02% sodium azide.

### | Basic Information

**Clonality** Polyclonal

### | Immunogen Information

**Immunogen** The antiserum was produced against synthesized peptide derived from the Internal region of human TNFSF4. AA range: 31-80

**Specificity** Ox40L Polyclonal Antibody detects endogenous levels of Ox40L protein.

## | Target Information

**Gene name** TNFSF4

**Protein Name** Tumor necrosis factor ligand superfamily member 4

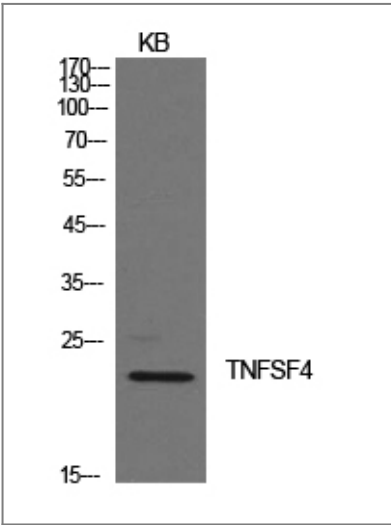
| Organism | Gene ID                 | UniProt ID               |
|----------|-------------------------|--------------------------|
| Human    | <a href="#">7292</a> ;  | <a href="#">P23510</a> ; |
| Mouse    | <a href="#">22164</a> ; | <a href="#">P43488</a> ; |
| Rat      | <a href="#">89814</a> ; | <a href="#">Q9Z2P3</a> ; |

**Cellular Localization** Membrane; Single-pass type II membrane protein.

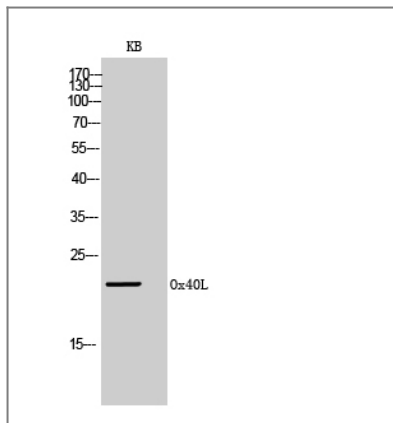
**Tissue specificity** Testis,

**Function** Disease:Genetic variation in TNFSF4 influences susceptibility to systemic lupus erythematosus (SLE) [MIM:152700]. SLE is a chronic, inflammatory and often febrile multisystemic disorder of connective tissue. It affects principally the skin, joints, kidneys and serosal membranes. It is thought to represent a failure of the regulatory mechanisms of the autoimmune system.,Function:Cytokine that binds to TNFRSF4. Co-stimulates T-cell proliferation and cytokine production.,induction:By human T-cell leukemia virus type I transactivator P40-TAX.,similarity:Belongs to the tumor necrosis factor family.,subunit:Homotrimer.,

## | Validation Data



Western Blot analysis of KB cells using Ox40L Polyclonal Antibody. Secondary antibody(catalog#:RS0002) was diluted at 1:20000



Western Blot analysis of KB cells using Ox40L Polyclonal Antibody. Secondary antibody(catalog#:RS0002) was diluted at 1:20000

## Contact information

Orders: order.cn@immunoway.com  
Support: support.cn@immunoway.com  
Telephone: 400-8787-807(China)  
Website: <http://www.immunoway.com.cn>  
Address: 2200 Ringwood Ave San Jose, CA 95131 USA



Please scan the QR code  
to access additional  
product information:  
**Ox40L Rabbit pAb**

For Research Use Only. Not for Use in Diagnostic Procedures.

[Antibody](#) | [ELISA Kits](#) | [Protein](#) | [Reagents](#)