

Blr1 Rabbit pAb

CatalogNo: YT5613

Key Features

Host Species

- Rabbit

Reactivity

- Human,Rat,Mouse,

Applications

- WB,ELISA

MW

- 42kD (Observed)

Isotype

- IgG

Recommended Dilution Ratios

WB 1:500-1:2000

ELISA 1:10000

Not yet tested in other applications.

Storage

Storage*

-15°C to -25°C/1 year(Do not lower than -25°C)

Formulation

Liquid in PBS containing 50% glycerol, 0.5% BSA and 0.02% sodium azide.

Basic Information

Clonality

Polyclonal

Immunogen Information

Immunogen

The antiserum was produced against synthesized peptide derived from the N-terminal region of human CXCR5. AA range:1-50

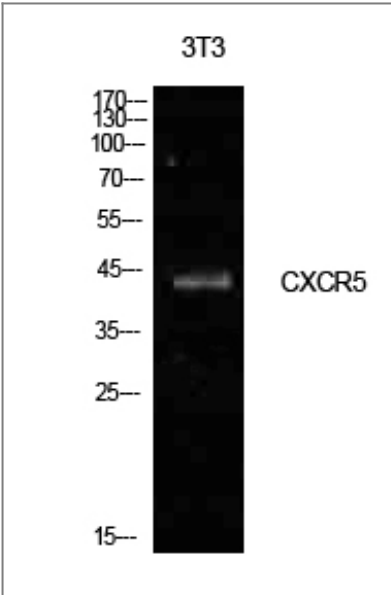
Specificity

Blr1 Polyclonal Antibody detects endogenous levels of Blr1 protein.

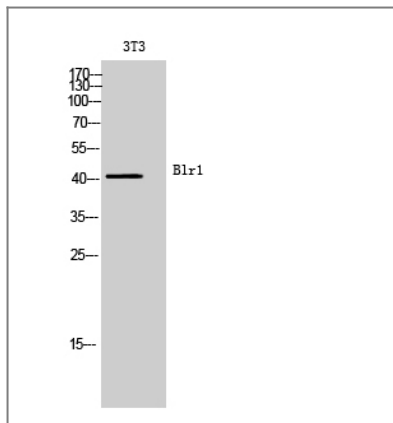
Target Information

Gene name	CXCR5		
Protein Name	C-X-C chemokine receptor type 5		
	Organism	Gene ID	UniProt ID
	Human	643 ;	P32302 ;
	Mouse		Q04683 ;
Cellular Localization	Cell membrane; Multi-pass membrane protein.		
Tissue specificity	Expression in mature B-cells and Burkitt lymphoma cells.		
Function	Function:Cytokine receptor that binds to B-lymphocyte chemoattractant (BLC). Involved in B-cell migration into B-cell follicles of spleen and Peyer patches but not into those of mesenteric or peripheral lymph nodes. May have a regulatory function in Burkitt lymphoma (BL) lymphomagenesis and/or B-cell differentiation.,online information:CXC chemokine receptors entry,similarity:Belongs to the G-protein coupled receptor 1 family.,tissue specificity:Expression in mature B-cells and Burkitt lymphoma cells.,		

| Validation Data



Western Blot analysis of NIH-3T3 cells using Blr1 Polyclonal Antibody. Secondary antibody(catalog#:RS0002) was diluted at 1:20000



Western Blot analysis of 3T3 cells using Blr1 Polyclonal Antibody. Secondary antibody(catalog#:RS0002) was diluted at 1:20000

Contact information

Orders: order.cn@immunoway.com
Support: support.cn@immunoway.com
Telephone: 400-8787-807(China)
Website: <http://www.immunoway.com.cn>
Address: 2200 Ringwood Ave San Jose, CA 95131 USA



Please scan the QR code
to access additional
product information:
Blr1 Rabbit pAb

For Research Use Only. Not for Use in Diagnostic Procedures.

[Antibody](#) | [ELISA Kits](#) | [Protein](#) | [Reagents](#)