

## NOXIN Rabbit pAb

CatalogNo: YT5564

### Key Features

#### Host Species

- Rabbit

#### Reactivity

- Human, Mouse

#### Applications

- WB, ELISA

#### MW

- 85kD (Observed)

#### Isotype

- IgG

### Recommended Dilution Ratios

**WB 1:500-1:2000**

**ELISA 1:10000**

**Not yet tested in other applications.**

### Storage

#### Storage\*

-15°C to -25°C/1 year (Do not lower than -25°C)

#### Formulation

Liquid in PBS containing 50% glycerol, 0.5% BSA and 0.02% sodium azide.

### Basic Information

#### Clonality

Polyclonal

### Immunogen Information

#### Immunogen

The antiserum was produced against synthesized peptide derived from the Internal region of human NOXIN. AA range: 111-160

#### Specificity

NOXIN Polyclonal Antibody detects endogenous levels of NOXIN protein.

### Target Information

**Gene name** NOXIN

**Protein Name** Nitric oxide-inducible gene protein

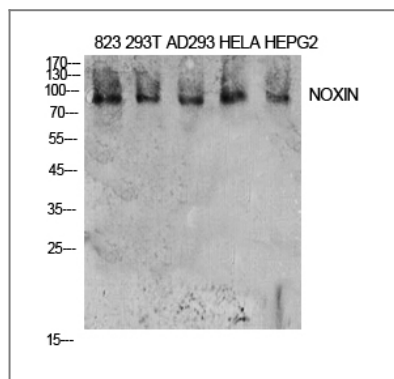
Organism	Gene ID	UniProt ID
Human	<a href="#">220042</a> ;	<a href="#">Q8IXT1</a> ;
Mouse		<a href="#">Q6NZG4</a> ;

**Cellular Localization** Cytoplasm . Nucleus . Accumulates in the nucleus in response to stress. .

**Tissue specificity** Highly expressed in colorectal and lung cancer tissues.

**Function** Function:Acts as an anti-apoptotic factor and its absence increases cell death under normal and stress conditions. Can induce cell cycle arrest in the G1 or early S phase and this activity is independent of TP53/p53.,subcellular location:Accumulates in the nucleus in response to stress.,

## Validation Data



Western Blot analysis of 823, 293T, AD293, Hela, HepG2 cells using NOXIN Polyclonal Antibody. Antibody was diluted at 1:2000. Secondary antibody(catalog#:RS0002) was diluted at 1:20000

## Contact information

Orders: order.cn@immunoway.com  
Support: support.cn@immunoway.com  
Telephone: 400-8787-807(China)  
Website: <http://www.immunoway.com.cn>  
Address: 2200 Ringwood Ave San Jose, CA 95131 USA



Please scan the QR code to access additional product information:  
**NOXIN Rabbit pAb**