

IL-6R α Rabbit pAb

CatalogNo: YT5546

Key Features

Host Species

- Rabbit

Reactivity

- Human,Rat

Applications

- WB,IHC,IF,ELISA

MW

- 53kD (Observed)

Isotype

- IgG

Recommended Dilution Ratios

IHC: 100-300**WB 1:500-1:2000****ELISA 1:10000****IF 1:50-200**

Storage

Storage*

-15°C to -25°C/1 year(Do not lower than -25°C)

Formulation

Liquid in PBS containing 50% glycerol, 0.5% BSA and 0.02% sodium azide.

Basic Information

Clonality

Polyclonal

Immunogen Information

Immunogen

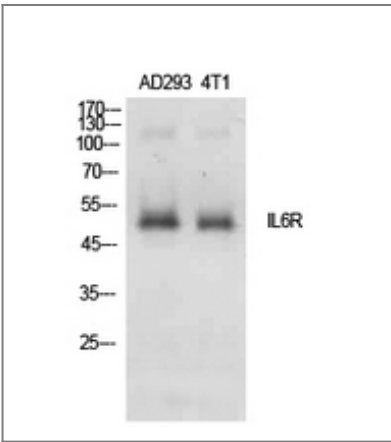
The antiserum was produced against synthesized peptide derived from the Internal region of human IL6R. AA range:221-270

SpecificityIL-6R α Polyclonal Antibody detects endogenous levels of IL-6R α protein.

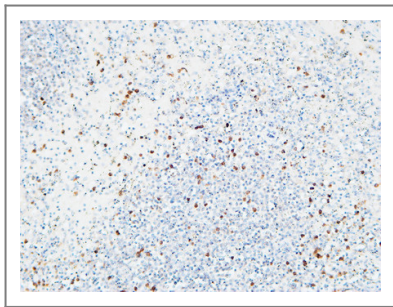
Target Information

Gene name	IL6R		
Protein Name	Interleukin-6 receptor subunit alpha		
	Organism	Gene ID	UniProt ID
	Human	3570 ;	P08887 ;
	Mouse		P22272 ;
Cellular Localization	[Isoform 1]: Cell membrane ; Single-pass type I membrane protein .; [Isoform 2]: Secreted .; [Soluble interleukin-6 receptor subunit alpha]: Secreted .		
Tissue specificity	[Isoform 2]: Expressed in peripheral blood mononuclear cells and weakly found in urine and serum. 1%-20% of the total sIL6R in plasma is generated by alternative splicing (PubMed:28060820).		
Function	Domain:The two fibronectin type-III-like domains, contained in the N-terminal part, form together a cytokine-binding domain.,Domain:The WSXWS motif appears to be necessary for proper protein folding and thereby efficient intracellular transport and cell-surface receptor binding.,Function:Low concentration of a soluble form of IL6 receptor acts as an agonist of IL6 activity.,Function:Part of the receptor for interleukin 6. Binds to IL6 with low affinity, but does not transduce a signal. Signal activation necessitate an association with IL6ST. Activation may lead to the regulation of the immune response, acute-phase reactions and hematopoiesis.,PTM:A short soluble form may also be released from the membrane by proteolysis.,similarity:Belongs to the type I cytokine receptor family. Type 3 subfamily.,similarity:Contains 1 fibronectin type-III domain.,similarity:Contains 1 Ig-like C2-type (immunoglobulin-like) domain.,subunit:Hexamer of two molecules each of IL6, IL6R and IL6ST.,tissue specificity:Isoform 2 is expressed in peripheral blood mononuclear cells and weakly found in urine and serum.,		

| Validation Data



Western Blot analysis of AD293, 4T1 cells using IL-6Rα Polyclonal Antibody. Secondary antibody(catalog#:RS0002) was diluted at 1:20000



Immunohistochemical analysis of paraffin-embedded Human spleen. 1, Antibody was diluted at 1:200(4° overnight). 2, High-pressure and temperature EDTA, pH8.0 was used for antigen retrieval. 3,Secondary antibody was diluted at 1:200(room temperature, 30min).

Contact information

Orders: order.cn@immunoway.com
Support: support.cn@immunoway.com
Telephone: 400-8787-807(China)
Website: <http://www.immunoway.com.cn>
Address: 2200 Ringwood Ave San Jose, CA 95131 USA



Please scan the QR code
to access additional
product information:
IL-6R α Rabbit pAb

For Research Use Only. Not for Use in Diagnostic Procedures.

[Antibody](#) | [ELISA Kits](#) | [Protein](#) | [Reagents](#)