

G-CSFR Rabbit pAb

CatalogNo: YT5527

Key Features

Host Species

- Rabbit

Reactivity

- Human, Mouse

Applications

- WB, ELISA

MW

- 92kD (Observed)

Isotype

- IgG

Recommended Dilution Ratios

WB 1:500-1:2000**ELISA 1:20000****Not yet tested in other applications.**

Storage

Storage*

-15°C to -25°C/1 year (Do not lower than -25°C)

Formulation

Liquid in PBS containing 50% glycerol, 0.5% BSA and 0.02% sodium azide.

Basic Information

Clonality

Polyclonal

Immunogen Information

Immunogen

The antiserum was produced against synthesized peptide derived from the Internal region of human CSF3R. AA range: 321-370

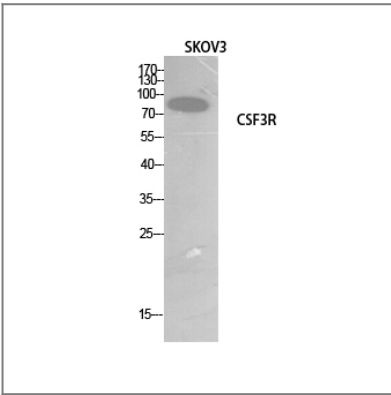
Specificity

G-CSFR Polyclonal Antibody detects endogenous levels of G-CSFR protein.

Target Information

Gene name	CSF3R		
Protein Name	Granulocyte colony-stimulating factor receptor		
	Organism	Gene ID	UniProt ID
	Human	1441 ;	Q99062 ;
	Mouse		P40223 ;
Cellular Localization	[Isoform 2]: Secreted .; Cell membrane ; Single-pass type I membrane protein .		
Tissue specificity	One or several isoforms have been found in myelogenous leukemia cell line KG-1, leukemia U-937 cell line, in bone marrow cells, placenta, and peripheral blood granulocytes. Isoform GCSFR-2 is found only in leukemia U-937 cells. Isoform GCSFR-3 is highly expressed in placenta.		
Function	Alternative products:Additional isoforms seem to exist. Experimental confirmation may be lacking for some isoforms,Disease:Defects in CSF3R may be a cause of severe congenital neutropenia (SCN) in some patients.,Domain:The box 1 motif is required for JAK interaction and/or activation.,Domain:The WSXWS motif appears to be necessary for proper protein folding and thereby efficient intracellular transport and cell-surface receptor binding.,Function:Receptor for granulocyte colony-stimulating factor (CSF3). In addition it may function in some adhesion or recognition events at the cell surface.,similarity:Belongs to the type I cytokine receptor family. Type 2 subfamily.,similarity:Contains 1 Ig-like C2-type (immunoglobulin-like) domain.,similarity:Contains 5 fibronectin type-III domains.,subunit:Homodimer. The dimeric receptor binds two CSF3 molecules.,tissue specificity:One or several isoforms have been found in myelogenous leukemia cell line KG-1, leukemia U937 cell line, in bone marrow cells, placenta, and peripheral blood granulocytes. Isoform GCSFR-2 is found only in leukemia U937 cells. Isoform GSCFR-3 is highly expressed in placenta.,		

| Validation Data



Western Blot analysis of SKOV3 cells using G-CSFR Polyclonal Antibody. Secondary antibody(catalog#:RS0002) was diluted at 1:20000

| Contact information

Orders: order.cn@immunoway.com
Support: support.cn@immunoway.com
Telephone: 400-8787-807(China)
Website: <http://www.immunoway.com.cn>
Address: 2200 Ringwood Ave San Jose, CA 95131 USA



Please scan the QR code
to access additional
product information:
G-CSFR Rabbit pAb

For Research Use Only. Not for Use in Diagnostic Procedures.

[Antibody](#) | [ELISA Kits](#) | [Protein](#) | [Reagents](#)