

## TRPC3 Rabbit pAb

CatalogNo: YT5520

### Key Features

#### Host Species

- Rabbit

#### Reactivity

- Human, Mouse, Rat

#### Applications

- WB, IHC, IF, ELISA

#### MW

- 97kD (Observed)

#### Isotype

- IgG

### Recommended Dilution Ratios

**WB 1:500-1:2000**

**IHC: 1:100-1:300**

**ELISA 1:20000**

**IF 1:50-200**

### Storage

#### Storage\*

-15°C to -25°C/1 year (Do not lower than -25°C)

#### Formulation

Liquid in PBS containing 50% glycerol, 0.5% BSA and 0.02% sodium azide.

### Basic Information

#### Clonality

Polyclonal

### Immunogen Information

#### Immunogen

The antiserum was produced against synthesized peptide derived from the Internal region of human TRPC3. AA range: 411-460

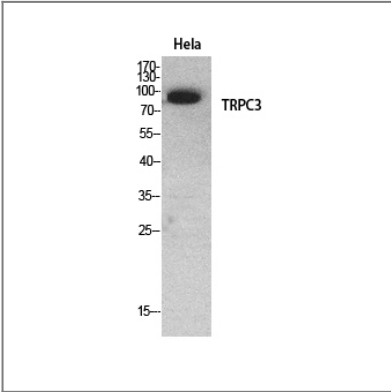
#### Specificity

TRPC3 Polyclonal Antibody detects endogenous levels of TRPC3 protein.

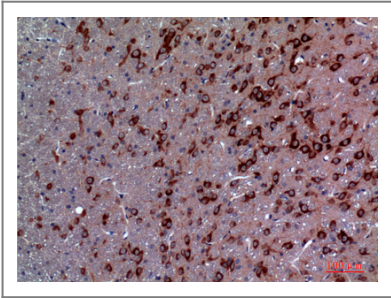
### Target Information

Gene name	TRPC3		
Protein Name	Short transient receptor potential channel 3		
	Organism	Gene ID	UniProt ID
	Human	<a href="#">7222;</a>	<a href="#">Q13507;</a>
	Mouse		<a href="#">Q9QZC1;</a>
	Rat		<a href="#">Q9JMI9;</a>
Cellular Localization	Membrane; Multi-pass membrane protein.		
Tissue specificity	Expressed predominantly in brain and at much lower levels in ovary, colon, small intestine, lung, prostate, placenta and testis.		
Function	Function:Thought to form a receptor-activated non-selective calcium permeant cation channel. Probably is operated by a phosphatidylinositol second messenger system activated by receptor tyrosine kinases or G-protein coupled receptors. Activated by diacylglycerol (DAG) in a membrane-delimited fashion, independently of protein kinase C, and by inositol-1,4,5-triphosphate receptors (ITPR) with bound IP3. May also be activated by internal calcium store depletion.,similarity:Belongs to the transient receptor family. STpC subfamily.,similarity:Contains 5 ANK repeats.,subunit:Interacts with TRPC1. Interacts with ITPR3. Interacts with MX1 and RNF24.,tissue specificity:Expressed predominantly in brain and at much lower levels in ovary, colon, small intestine, lung, prostate, placenta and testis.,		

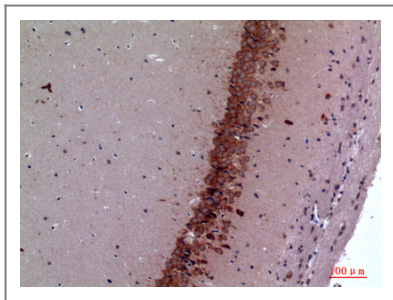
Validation Data



Western Blot analysis of HeLa cells using TRPC3 Polyclonal Antibody. Secondary antibody(catalog#:RS0002) was diluted at 1:20000



Immunohistochemical analysis of paraffin-embedded rat-brain, antibody was diluted at 1:100



Immunohistochemical analysis of paraffin-embedded mouse-brain, antibody was diluted at 1:100

## Contact information

Orders: [order.cn@immunoway.com](mailto:order.cn@immunoway.com)  
Support: [support.cn@immunoway.com](mailto:support.cn@immunoway.com)  
Telephone: 400-8787-807(China)  
Website: <http://www.immunoway.com.cn>  
Address: 2200 Ringwood Ave San Jose, CA 95131 USA



Please scan the QR code  
to access additional  
product information:  
**TRPC3 Rabbit pAb**

For Research Use Only. Not for Use in Diagnostic Procedures.

[Antibody](#) | [ELISA Kits](#) | [Protein](#) | [Reagents](#)