

TRAIL Rabbit pAb

CatalogNo: YT5511

Orthogonal Validated 

Key Features

Host Species

- Rabbit

Reactivity

- Human, Mouse

Applications

- WB, IHC, IF, ELISA

MW

- 33kD (Observed)

Isotype

- IgG

Recommended Dilution Ratios

WB 1:500-1:2000

IHC: 1:100-1:300

ELISA 1:20000

IF 1:50-200

Storage

Storage* -15°C to -25°C/1 year (Do not lower than -25°C)**Formulation** Liquid in PBS containing 50% glycerol, 0.5% BSA and 0.02% sodium azide.

Basic Information

Clonality Polyclonal

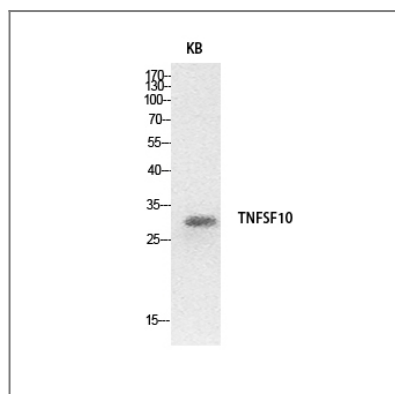
Immunogen Information

Immunogen The antiserum was produced against synthesized peptide derived from the Internal region of human TNFSF10. AA range: 31-80**Specificity** TRAIL Polyclonal Antibody detects endogenous levels of TRAIL protein.

Target Information

Gene name	TNFSF10		
Protein Name	Tumor necrosis factor ligand superfamily member 10		
	Organism	Gene ID	UniProt ID
	Human	8743;	P50591;
	Mouse		P50592;
Cellular Localization	Cell membrane ; Single-pass type II membrane protein . Secreted . Exists both as membrane-bound and soluble form. .		
Tissue specificity	Widespread; most predominant in spleen, lung and prostate.		
Function	cofactor: Binds 1 zinc ion per trimer., Function: Cytokine that binds to TNFRSF10A/TRAILR1, TNFRSF10B/TRAILR2, TNFRSF10C/TRAILR3, TNFRSF10D/TRAILR4 and possibly also to TNFRSF11B/OPG. Induces apoptosis. Its activity may be modulated by binding to the decoy receptors TNFRSF10C/TRAILR3, TNFRSF10D/TRAILR4 and TNFRSF11B/OPG that cannot induce apoptosis., similarity: Belongs to the tumor necrosis factor family., subunit: Homotrimer., tissue specificity: Widespread; most predominant in spleen, lung and prostate.,		

Validation Data



Western Blot analysis of HeLa cells using TRAIL Polyclonal Antibody. Secondary antibody (catalog #: RS0002) was diluted at 1:20000

Contact information

Orders: order.cn@immunoway.com
 Support: support.cn@immunoway.com
 Telephone: 400-8787-807 (China)
 Website: <http://www.immunoway.com.cn>
 Address: 2200 Ringwood Ave San Jose, CA 95131 USA



Please scan the QR code to access additional product information:
TRAIL Rabbit pAb

