

POLR3G Rabbit pAb

CatalogNo: YT5489

Key Features

Host Species

- Rabbit

Reactivity

- Human, Mouse, Rat

Applications

- WB, IHC, IF, ELISA

MW

- 26kD (Observed)

Isotype

- IgG

Recommended Dilution Ratios

WB 1:500-1:2000**IHC: 1:100-1:300****ELISA 1:20000****IF 1:50-200**

Storage

Storage*

-15°C to -25°C/1 year (Do not lower than -25°C)

Formulation

Liquid in PBS containing 50% glycerol, 0.5% BSA and 0.02% sodium azide.

Basic Information

Clonality

Polyclonal

Immunogen Information

Immunogen

The antiserum was produced against synthesized peptide derived from the Internal region of human POLR3G. AA range: 151-200

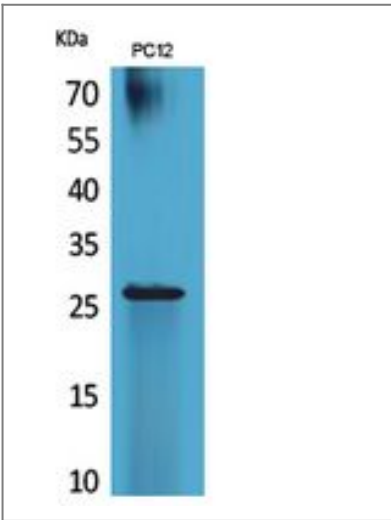
Specificity

POLR3G Polyclonal Antibody detects endogenous levels of POLR3G protein.

Target Information

Gene name	POLR3G		
Protein Name	DNA-directed RNA polymerase III subunit RPC7		
	Organism	Gene ID	UniProt ID
	Human	10622;	O15318;
	Mouse	67486;	Q6NXY9;
Cellular Localization	Nucleus . Cytoplasm . Excluded from nucleoli (PubMed:21898682). In zygotes and the 2-cell stage embryos, mainly in the cytoplasm. Starts to localize to the nucleus in the 8-16 cell stage embryo and early blastocysts (By similarity). .		
Tissue specificity	Barely detectable in differentiated tissues. Expressed in embryonic stem cells and in other dividing cells, such as some tumor cell lines.		
Function	Function:DNA-dependent RNA polymerase catalyzes the transcription of DNA into RNA using the four ribonucleoside triphosphates as substrates. Specific peripheric component of RNA polymerase III which synthesizes small RNAs, such as 5S rRNA and tRNAs. May direct with other members of the RPC3/POLR3C-RPC6/POLR3F-RPC7/POLR3G subcomplex RNA Pol III binding to the TFIIIB-DNA complex via the interactions between TFIIIB and POLR3F. May be involved either in the recruitment and stabilization of the subcomplex within RNA polymerase III, or in stimulating catalytic functions of other subunits during initiation.,similarity:Belongs to the eukaryotic RPC7 RNA polymerase subunit family.,subunit:Component of the RNA polymerase III (Pol III) complex consisting of 17 subunits (By similarity). RPC3/POLR3C, RPC6/POLR3F and RPC7/POLR3G form a Pol III subcomplex.,		

| Validation Data



Western Blot analysis of PC12 cells using POLR3G Polyclonal Antibody. Secondary antibody(catalog#:RS0002) was diluted at 1:20000 cells nucleus extracted by Minute TM Cytoplasmic and Nuclear Fractionation kit (SC-003,Inventbiotech,MN,USA).

| Contact information

Orders: order.cn@immunoway.com
Support: support.cn@immunoway.com
Telephone: 400-8787-807(China)
Website: <http://www.immunoway.com.cn>
Address: 2200 Ringwood Ave San Jose, CA 95131 USA



Please scan the QR code
to access additional
product information:
POLR3G Rabbit pAb

For Research Use Only. Not for Use in Diagnostic Procedures.

[Antibody](#) | [ELISA Kits](#) | [Protein](#) | [Reagents](#)