

CD316 Rabbit pAb

CatalogNo: YT5482

Key Features

Host Species

- Rabbit

Reactivity

- Human, Mouse

Applications

- WB, ELISA

MW

- 65kD (Observed)

Isotype

- IgG

Recommended Dilution Ratios

WB 1:500-1:2000

ELISA 1:20000

Not yet tested in other applications.

Storage

Storage*

-15°C to -25°C/1 year (Do not lower than -25°C)

Formulation

Liquid in PBS containing 50% glycerol, 0.5% BSA and 0.02% sodium azide.

Basic Information

Clonality

Polyclonal

Immunogen Information

Immunogen

The antiserum was produced against synthesized peptide derived from the Internal region of human IGSF8. AA range: 451-500

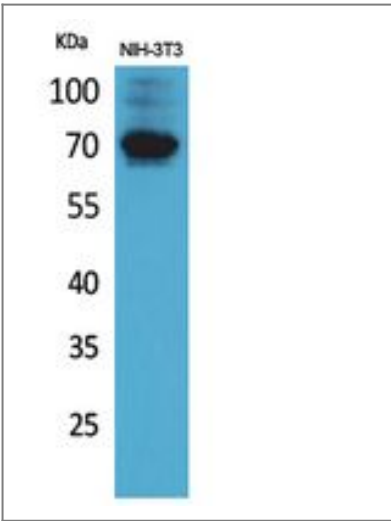
Specificity

CD316 Polyclonal Antibody detects endogenous levels of CD316 protein.

Target Information

| | | | |
|------------------------------|---|-------------------------|-------------------------|
| Gene name | IGSF8 | | |
| Protein Name | Immunoglobulin superfamily member 8 | | |
| | Organism | Gene ID | UniProt ID |
| | Human | 93185; | Q969P0; |
| | Mouse | 140559; | Q8R366; |
| Cellular Localization | Cell membrane ; Single-pass membrane protein. | | |
| Tissue specificity | Expressed in brain, kidney, testis, liver and placenta with moderate expression in all other tissues. Detected on a majority of B-cells, T-cells, and natural killer cells but not on monocytes, polynuclear cells and platelets. | | |
| Function | <p>Domain:The Ig-like C2-type domains 3 and 4 are required for interaction with CD81.,Function:May play a key role in diverse functions ascribed to CD81 and CD9 such as oocytes fertilization or hepatitis C virus function. May regulate proliferation and differentiation of keratinocytes. May be a negative regulator of cell motility: suppresses T-cell mobility coordinately with CD81, associates with CD82 to suppress prostate cancer cell migration, regulates epidermoid cell reaggregation and motility on laminin-5 with CD9 and CD81 as key linkers. May also play a role on integrin-dependent morphology and motility functions. May participate in the regulation of neurite outgrowth and maintenance of the neural network in the adult brain.,similarity:Contains 4 Ig-like C2-type (immunoglobulin-like) domains.,subunit:Interacts directly with CD82, CD81/tetraspanin-28 and CD9/tetraspanin-29. Also interacts with integrin alpha-3/beta-1 and integrin alpha-4/beta-1.,tissue specificity:Expressed in brain, kidney, testis, liver and placenta with moderate expression in all other tissues. Detected on a majority of B-cells, T-cells, and natural killer cells but not on monocytes, polynuclear cells and platelets.,</p> | | |

| Validation Data



Western Blot analysis of NIH-3T3 cells using CD316 Polyclonal Antibody. Secondary antibody(catalog#:RS0002) was diluted at 1:20000

| Contact information

Orders: order.cn@immunoway.com
Support: support.cn@immunoway.com
Telephone: 400-8787-807(China)
Website: <http://www.immunoway.com.cn>
Address: 2200 Ringwood Ave San Jose, CA 95131 USA



Please scan the QR code
to access additional
product information:
CD316 Rabbit pAb

For Research Use Only. Not for Use in Diagnostic Procedures.

[Antibody](#) | [ELISA Kits](#) | [Protein](#) | [Reagents](#)