

CD223 Rabbit pAb

CatalogNo: YT5480

Key Features

Host Species

- Rabbit

Reactivity

- Human,Rat,Mouse,

Applications

- WB,ELISA

MW

- 57kD (Observed)

Isotype

- IgG

Recommended Dilution Ratios

WB 1:500-1:2000

ELISA 1:20000

Not yet tested in other applications.

Storage

Storage* -15°C to -25°C/1 year(Do not lower than -25°C)

Formulation Liquid in PBS containing 50% glycerol, 0.5% BSA and 0.02% sodium azide.

Basic Information

Clonality Polyclonal

Immunogen Information

Immunogen The antiserum was produced against synthesized peptide derived from the Internal region of human LAG3. AA range:91-140

Specificity CD223 Polyclonal Antibody detects endogenous levels of CD223 protein.

Target Information

Gene name LAG3

Protein Name Lymphocyte activation gene 3 protein

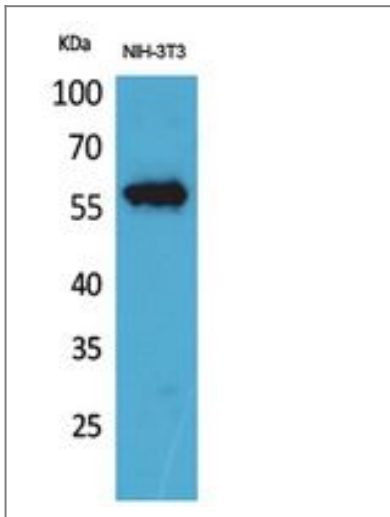
Organism	Gene ID	UniProt ID
Human	3902;	P18627;
Mouse	16768;	Q61790;
Rat	297596;	Q5BK54;

Cellular Localization [Lymphocyte activation gene 3 protein]: Cell membrane ; Single-pass type I membrane protein .; [Secreted lymphocyte activation gene 3 protein]: Secreted . Produced following cleavage of the main chain. .

Tissue specificity Primarily expressed in activated T-cells and a subset of natural killer (NK) cells.

Function Function:Involved in lymphocyte activation. Binds to HLA class-II antigens.,similarity:Contains 1 Ig-like V-type (immunoglobulin-like) domain.,similarity:Contains 3 Ig-like C2-type (immunoglobulin-like) domains.,tissue specificity:On cell surface of activated NK and T-lymphocytes.,

Validation Data



Western Blot analysis of NIH-3T3 cells using CD223 Polyclonal Antibody. Secondary antibody(catalog#:RS0002) was diluted at 1:20000

Contact information

Orders: order.cn@immunoway.com
Support: support.cn@immunoway.com
Telephone: 400-8787-807(China)
Website: <http://www.immunoway.com.cn>
Address: 2200 Ringwood Ave San Jose, CA 95131 USA



Please scan the QR code to access additional product information:
CD223 Rabbit pAb

