

## CD239 Rabbit pAb

CatalogNo: YT5477

### Key Features

#### Host Species

- Rabbit

#### Reactivity

- Human, Mouse, Rat

#### Applications

- WB, ELISA

#### MW

- 78kD (Observed)

#### Isotype

- IgG

### Recommended Dilution Ratios

**WB 1:500-1:2000**

**ELISA 1:20000**

**Not yet tested in other applications.**

### Storage

#### Storage\*

-15°C to -25°C/1 year (Do not lower than -25°C)

#### Formulation

Liquid in PBS containing 50% glycerol, 0.5% BSA and 0.02% sodium azide.

### Basic Information

#### Clonality

Polyclonal

### Immunogen Information

#### Immunogen

The antiserum was produced against synthesized peptide derived from the Internal region of human BCAM. AA range: 191-240

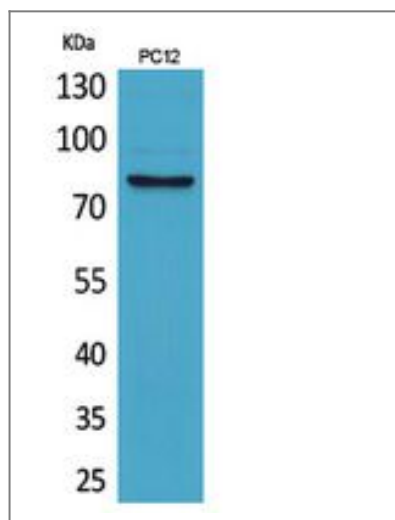
#### Specificity

CD239 Polyclonal Antibody detects endogenous levels of CD239 protein.

### Target Information

<b>Gene name</b>	BCAM		
<b>Protein Name</b>	Basal cell adhesion molecule		
	<b>Organism</b>	<b>Gene ID</b>	<b>UniProt ID</b>
	Human	<a href="#">4059;</a>	<a href="#">P50895;</a>
	Mouse	<a href="#">57278;</a>	<a href="#">Q9R069;</a>
	Rat	<a href="#">78958;</a>	<a href="#">Q9ESS6;</a>
<b>Cellular Localization</b>	Membrane; Single-pass type I membrane protein.		
<b>Tissue specificity</b>	Wide tissue distribution (highest in the pancreas and very low in brain). Closely associated with the basal layer of cells in epithelia and the endothelium of blood vessel walls.		
<b>Function</b>	cell adhesion, cell-matrix adhesion, biological adhesion, cell-substrate adhesion,		

## Validation Data



Western Blot analysis of PC12 cells using CD239 Polyclonal Antibody. Secondary antibody(catalog#:RS0002) was diluted at 1:20000

## Contact information

Orders: order.cn@immunoway.com  
 Support: support.cn@immunoway.com  
 Telephone: 400-8787-807(China)  
 Website: <http://www.immunoway.com.cn>  
 Address: 2200 Ringwood Ave San Jose, CA 95131 USA



Please scan the QR code to access additional product information:  
**CD239 Rabbit pAb**

