

## CD300f Rabbit pAb

CatalogNo: YT5475

### Key Features

#### Host Species

- Rabbit

#### Reactivity

- Human,Rat,Mouse,

#### Applications

- WB,IHC,IF,ELISA

#### MW

- 32kD (Observed)

#### Isotype

- IgG

### Recommended Dilution Ratios

**WB 1:500-1:2000**

**IHC: 1:100-1:300**

**ELISA 1:20000**

**IF 1:50-200**

### Storage

#### Storage\*

-15°C to -25°C/1 year(Do not lower than -25°C)

#### Formulation

Liquid in PBS containing 50% glycerol, 0.5% BSA and 0.02% sodium azide.

### Basic Information

#### Clonality

Polyclonal

### Immunogen Information

#### Immunogen

The antiserum was produced against synthesized peptide derived from the Internal region of human CD300LF. AA range:41-90

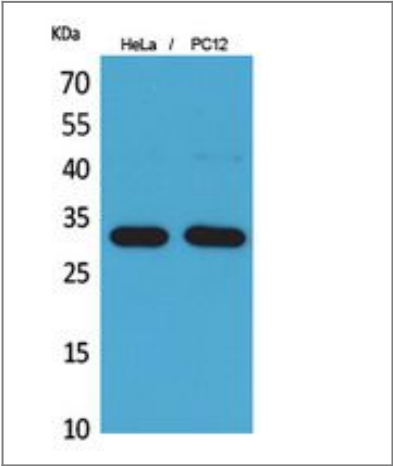
#### Specificity

CD300f Polyclonal Antibody detects endogenous levels of CD300f protein.

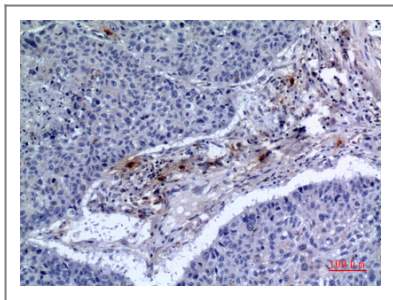
### Target Information

Gene name	CD300LF		
Protein Name	CMRF35-like molecule 1		
	Organism	Gene ID	UniProt ID
	Human	<a href="#">146722</a> ;	<a href="#">Q8TDQ1</a> ;
	Mouse	<a href="#">246746</a> ;	<a href="#">Q6SJQ7</a> ;
	Rat	<a href="#">287818</a> ;	<a href="#">Q566E6</a> ;
Cellular Localization	Cell membrane ; Single-pass type I membrane protein .		
Tissue specificity	Highly expressed in spleen, peripheral blood leukocyte and monocyte, and lung. Weakly expressed in thymus, heart, brain, placenta, liver, skeletal muscle, kidney, pancreas, prostate, testis, ovary, small intestine or colon. Expressed selectively in monocytes and monocyte-related cells.		
Function	Function:Acts as an inhibitory receptor for myeloid cells and mast cells. Inhibits osteoclast formation.,PTM:Phosphorylated on tyrosine.,similarity:Belongs to the CD300 family.,similarity:Contains 1 Ig-like V-type (immunoglobulin-like) domain.,subunit:Interacts with PTPN6/SHP-1 in a tyrosine phosphorylation dependent manner.,tissue specificity:Highly expressed in spleen, peripheral blood leukocyte and monocyte, and lung. Weakly expressed in thymus, heart, brain, placenta, liver, skeletal muscle, kidney, pancreas, prostate, testis, ovary, small intestine or colon. Expressed selectively in monocytes and monocyte-related cells.,		

Validation Data



Western Blot analysis of HeLa, PC12 cells using CD300f Polyclonal Antibody. Secondary antibody(catalog#:RS0002) was diluted at 1:20000



Immunohistochemical analysis of paraffin-embedded human-lung, antibody was diluted at 1:100

## **Contact information**

Orders: [order.cn@immunoway.com](mailto:order.cn@immunoway.com)  
Support: [support.cn@immunoway.com](mailto:support.cn@immunoway.com)  
Telephone: 400-8787-807(China)  
Website: <http://www.immunoway.com.cn>  
Address: 2200 Ringwood Ave San Jose, CA 95131 USA



Please scan the QR code  
to access additional  
product information:  
**CD300f Rabbit pAb**

For Research Use Only. Not for Use in Diagnostic Procedures.

[Antibody](#) | [ELISA Kits](#) | [Protein](#) | [Reagents](#)