

TPOR Rabbit pAb

CatalogNo: YT5469

Key Features

Host Species

- Rabbit

Reactivity

- Human, Mouse, Rat

Applications

- WB, IHC, IF, ELISA

MW

- 69,40kD (Observed)

Isotype

- IgG

Recommended Dilution Ratios

WB 1:500-1:2000**IHC: 1:100-1:300****ELISA 1:20000****IF 1:50-200**

Storage

Storage*

-15°C to -25°C/1 year (Do not lower than -25°C)

Formulation

Liquid in PBS containing 50% glycerol, 0.5% BSA and 0.02% sodium azide.

Basic Information

Clonality

Polyclonal

Immunogen Information

Immunogen

Synthesized peptide derived from Thrombopoietin receptor at AA range: 321-370

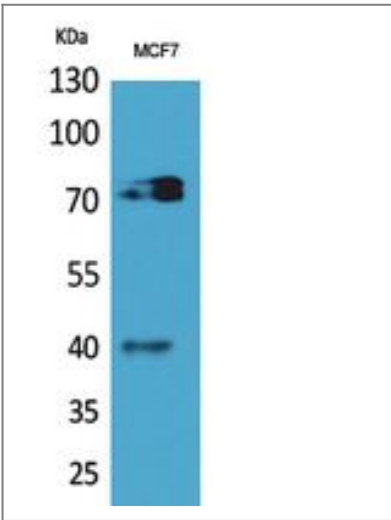
Specificity

CD110 Polyclonal Antibody detects endogenous levels of CD110 protein.

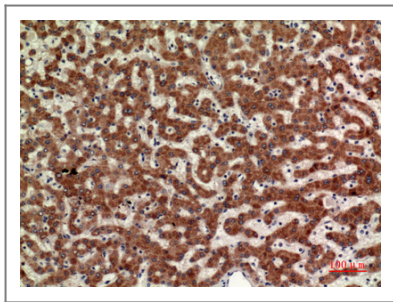
Target Information

Gene name	MPL TPOR		
Protein Name	Thrombopoietin receptor		
	Organism	Gene ID	UniProt ID
	Human	4352;	P40238;
	Mouse	17480;	Q08351;
Cellular Localization	Cell membrane ; Single-pass type I membrane protein. Golgi apparatus . Cell surface .		
Tissue specificity	Expressed at a low level in a large number of cells of hematopoietic origin. Isoform 1 and isoform 2 are always found to be coexpressed.		
Function	Caution:It is uncertain whether Met-1 or Met-8 is the initiator.,Disease:Defects in MPL are a cause of congenital amegakaryocytic thrombocytopenia (CAMT) [MIM:604498]. CAMT is a disease characterized by isolated thrombocytopenia and megakaryocytopenia with no physical anomalies.,Domain:The box 1 motif is required for JAK interaction and/or activation.,Domain:The WSXWS motif appears to be necessary for proper protein folding and thereby efficient intracellular transport and cell-surface receptor binding.,Function:Receptor for thrombopoietin. May represent a regulatory molecule specific for TPO-R-dependent immune responses.,similarity:Belongs to the type I cytokine receptor family. Type 1 subfamily.,similarity:Contains 2 fibronectin type-III domains.,subunit:Interacts with ATXN2L,tissue specificity:Expressed at a low level in a large number of cells of hematopoietic origin. Isoform 1 and isoform 2 are always found to be coexpressed.,		

| Validation Data



Western Blot analysis of MCF7 cells using CD110 Polyclonal Antibody. Secondary antibody(catalog#:RS0002) was diluted at 1:20000



Immunohistochemical analysis of paraffin-embedded human-liver, antibody was diluted at 1:100

Contact information

Orders: order.cn@immunoway.com
Support: support.cn@immunoway.com
Telephone: 400-8787-807(China)
Website: <http://www.immunoway.com.cn>
Address: 2200 Ringwood Ave San Jose, CA 95131 USA



Please scan the QR code to access additional product information:
TPOR Rabbit pAb

For Research Use Only. Not for Use in Diagnostic Procedures.

[Antibody](#) | [ELISA Kits](#) | [Protein](#) | [Reagents](#)