

CD85f Rabbit pAb

CatalogNo: YT5465

Key Features

Host Species

- Rabbit

Reactivity

- Human

Applications

- WB, ELISA

MW

- 33kD (Observed)

Isotype

- IgG

Recommended Dilution Ratios

WB 1:500-1:2000

ELISA 1:20000

Not yet tested in other applications.

Storage

Storage*

-15°C to -25°C/1 year (Do not lower than -25°C)

Formulation

Liquid in PBS containing 50% glycerol, 0.5% BSA and 0.02% sodium azide.

Basic Information

Clonality

Polyclonal

Immunogen Information

Immunogen

The antiserum was produced against synthesized peptide derived from the Internal region of human LILRA5. AA range:141-190

Specificity

CD85f Polyclonal Antibody detects endogenous levels of CD85f protein.

Target Information

Gene name LILRA5

Protein Name Leukocyte immunoglobulin-like receptor subfamily A member 5

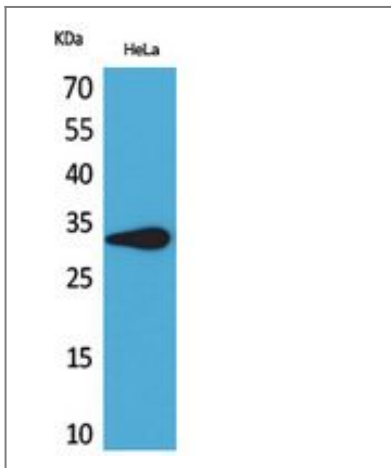
Organism	Gene ID	UniProt ID
Human	353514 ;	A6NI73 ;

Cellular Localization Cell membrane ; Single-pass type I membrane protein .; [Isoform 3]: Secreted .

Tissue specificity Expressed mostly in tissues of the hematopoietic system, including bone marrow, spleen, lymph node and peripheral leukocytes. Among leukocytes, monocytes and neutrophils express the highest level. Expressed in CD14+ monocytes, but not in T-cells, B-cells or natural killer (NK) cells (at protein level).

Function Function:May plays a role in triggering innate immune responses. Seems not play a role for any class I MHC antigens recognition.,similarity:Contains 2 Ig-like C2-type (immunoglobulin-like) domains.,tissue specificity:Expressed mostly in tissues of the hematopoietic system, including bone marrow, spleen, lymph node and peripheral leukocytes. Among leukocytes, monocytes and neutrophils express the highest level. Expressed in CD14+ monocytes, but not in T-cells, B-cells or natural killer (NK) cells (at protein level).,

Validation Data



Western Blot analysis of HeLa cells using CD85f Polyclonal Antibody. Secondary antibody(catalog#:RS0002) was diluted at 1:20000

Contact information

Orders: order.cn@immunoway.com
Support: support.cn@immunoway.com
Telephone: 400-8787-807(China)
Website: <http://www.immunoway.com.cn>
Address: 2200 Ringwood Ave San Jose, CA 95131 USA



Please scan the QR code to access additional product information:
CD85f Rabbit pAb

