

## D3DR Rabbit pAb

CatalogNo: YT5448

Orthogonal Validated 

### Key Features

#### Host Species

- Rabbit

#### Reactivity

- Human, Mouse, Rat

#### Applications

- WB, ELISA

#### MW

- 44kD (Observed)

#### Isotype

- IgG

### Recommended Dilution Ratios

**WB 1:500-1:2000****ELISA 1:20000****Not yet tested in other applications.**

### Storage

**Storage\*** -15°C to -25°C/1 year (Do not lower than -25°C)**Formulation** Liquid in PBS containing 50% glycerol, 0.5% BSA and 0.02% sodium azide.

### Basic Information

**Clonality** Polyclonal

### Immunogen Information

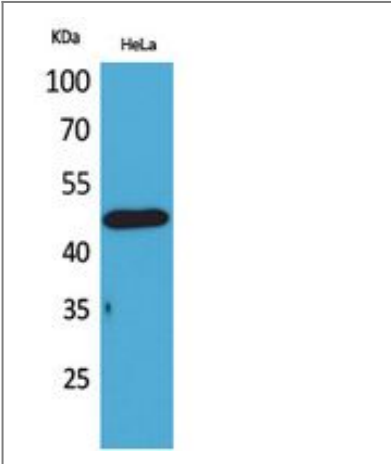
**Immunogen** Synthesized peptide derived from D3DR . at AA range: 181-230**Specificity** D3DR Polyclonal Antibody detects endogenous levels of D3DR protein.

### Target Information

**Gene name** DRD3

Protein Name	D(3) dopamine receptor		
	Organism	Gene ID	UniProt ID
	Human	<a href="#">1814;</a>	<a href="#">P35462;</a>
	Mouse	<a href="#">13490;</a>	<a href="#">P30728;</a>
	Rat	<a href="#">29238;</a>	<a href="#">P19020;</a>
Cellular Localization	Cell membrane ; Multi-pass membrane protein . Both membrane-bound and scattered in the cytoplasm during basal conditions. Receptor stimulation results in the rapid internalization and sequestration of the receptors at the perinuclear area (5 and 15 minutes), followed by the dispersal of the receptors to the membrane (30 minutes). DRD3 and GRK4 co-localize in lipid rafts of renal proximal tubule cells.		
Tissue specificity	Brain.		
Function	Disease:Genetic variation in DRD3 may be associated with susceptibility to hereditary essential tremor 1 (ETM1) [MIM:190300]. ETM1 is the most common movement disorder. The main feature is postural tremor of the arms. Head, legs, trunk, voice, jaw, and facial muscles also may be involved. The condition can be aggravated by emotions, hunger, fatigue and temperature extremes, and may cause a functional disability or even incapacitation. Inheritance is autosomal dominant.,Function:This is one of the five types (D1 to D5) of receptors for dopamine. The activity of this receptor is mediated by G proteins which inhibit adenylyl cyclase.,online information:The Singapore human mutation and polymorphism database,similarity:Belongs to the G-protein coupled receptor 1 family.,subunit:Interacts with CLIC6.,tissue specificity:Brain.,		

Validation Data



Western Blot analysis of HeLa cells using D3DR Polyclonal Antibody. Secondary antibody(catalog#:RS0002) was diluted at 1:20000

Contact information

Orders: order.cn@immunoway.com  
Support: support.cn@immunoway.com  
Telephone: 400-8787-807(China)  
Website: <http://www.immunoway.com.cn>  
Address: 2200 Ringwood Ave San Jose, CA 95131 USA



Please scan the QR code  
to access additional  
product information:  
**D3DR Rabbit pAb**

---

For Research Use Only. Not for Use in Diagnostic Procedures.

[Antibody](#) | [ELISA Kits](#) | [Protein](#) | [Reagents](#)