

## FGF-16 Rabbit pAb

CatalogNo: YT5441

### Key Features

#### Host Species

- Rabbit

#### Reactivity

- Human, Mouse, Rat

#### Applications

- WB, IHC, IF, ELISA

#### MW

- 24kD (Observed)

#### Isotype

- IgG

### Recommended Dilution Ratios

WB 1:500-1:2000

IHC: 1:100-1:300

ELISA 1:20000

IF 1:50-200

### Storage

#### Storage\*

-15°C to -25°C/1 year (Do not lower than -25°C)

#### Formulation

Liquid in PBS containing 50% glycerol, 0.5% BSA and 0.02% sodium azide.

### Basic Information

#### Clonality

Polyclonal

### Immunogen Information

#### Immunogen

The antiserum was produced against synthesized peptide derived from the Internal region of human FGF16. AA range:141-190

#### Specificity

FGF-16 Polyclonal Antibody detects endogenous levels of FGF-16 protein.

### Target Information

**Gene name** FGF16

**Protein Name** Fibroblast growth factor 16

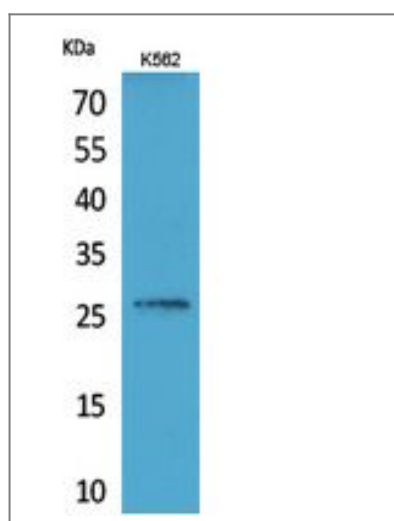
Organism	Gene ID	UniProt ID
Human	<a href="#">8823;</a>	<a href="#">O43320;</a>
Mouse	<a href="#">80903;</a>	<a href="#">Q9ESL8;</a>
Rat	<a href="#">60464;</a>	<a href="#">O54769;</a>

**Cellular Localization** Secreted .

**Tissue specificity** Heart,

**Function** Function:Induces hepatocellular proliferation. Has no biological effect on the heart.,similarity:Belongs to the heparin-binding growth factors family.,

## | Validation Data



Western Blot analysis of K562 cells using FGF-16 Polyclonal Antibody. Secondary antibody(catalog#:RS0002) was diluted at 1:20000

## | Contact information

Orders: order.cn@immunoway.com  
Support: support.cn@immunoway.com  
Telephone: 400-8787-807(China)  
Website: <http://www.immunoway.com.cn>  
Address: 2200 Ringwood Ave San Jose, CA 95131 USA



Please scan the QR code to access additional product information:  
**FGF-16 Rabbit pAb**

