

## Apaf-1 Rabbit pAb

CatalogNo: YT5378

Orthogonal Validated 

### Key Features

#### Host Species

- Rabbit

#### Reactivity

- Human, Mouse, Rat

#### Applications

- WB, IHC, IF, ELISA

#### MW

- 135kD (Observed)

#### Isotype

- IgG

### Recommended Dilution Ratios

WB 1:500-1:2000

IHC: 1:100-1:300

ELISA 1:20000

IF 1:50-200

### Storage

**Storage\*** -15°C to -25°C/1 year(Do not lower than -25°C)**Formulation** Liquid in PBS containing 50% glycerol, 0.5% BSA and 0.02% sodium azide.

### Basic Information

**Clonality** Polyclonal

### Immunogen Information

**Immunogen** The antiserum was produced against synthesized peptide derived from the Internal region of human APAF1. AA range:501-550**Specificity** Apaf-1 Polyclonal Antibody detects endogenous levels of Apaf-1 protein.

### Target Information

**Gene name** APAF1

**Protein Name** Apoptotic protease-activating factor 1

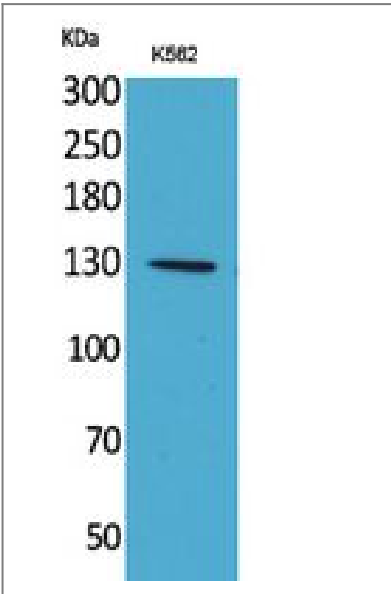
Organism	Gene ID	UniProt ID
Human	<a href="#">317;</a>	<a href="#">O14727;</a>
Mouse	<a href="#">11783;</a>	<a href="#">O88879;</a>
Rat	<a href="#">78963;</a>	<a href="#">Q9EPV5;</a>

**Cellular Localization** Cytoplasm .

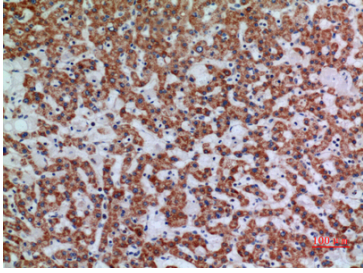
**Tissue specificity** Ubiquitous. Highest levels of expression in adult spleen and peripheral blood leukocytes, and in fetal brain, kidney and lung. Isoform 1 is expressed in heart, kidney and liver.

**Function** Domain:The CARD domain mediates interaction with APIP.,Function:Oligomeric Apaf-1 mediates the cytochrome c-dependent autocatalytic activation of pro-caspase-9 (Apaf-3), leading to the activation of caspase-3 and apoptosis. This activation requires ATP. Isoform 6 is less effective in inducing apoptosis.,induction:By E2F and p53 in apoptotic neurons.,similarity:Contains 1 CARD domain.,similarity:Contains 1 NB-ARC domain.,similarity:Contains 13 WD repeats.,subunit:Monomer. Oligomerizes upon binding of cytochrome c and dATP. Oligomeric Apaf-1 and pro-caspase-9 bind to each other via their respective NH2-terminal CARD domains and consecutively mature caspase-9 is released from the complex. Pro-caspase-3 is recruited into the Apaf-1-pro-caspase-9 complex via interaction with pro-caspase-9. Interacts with APIP.,tissue specificity:Ubiquitous. Highest levels of expression in adult spleen and peripheral blood leukocytes, and in fetal brain, kidney and lung. Isoform 1 is expressed in heart, kidney and liver.,

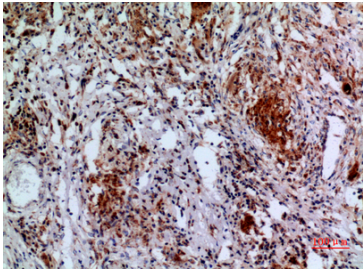
## Validation Data



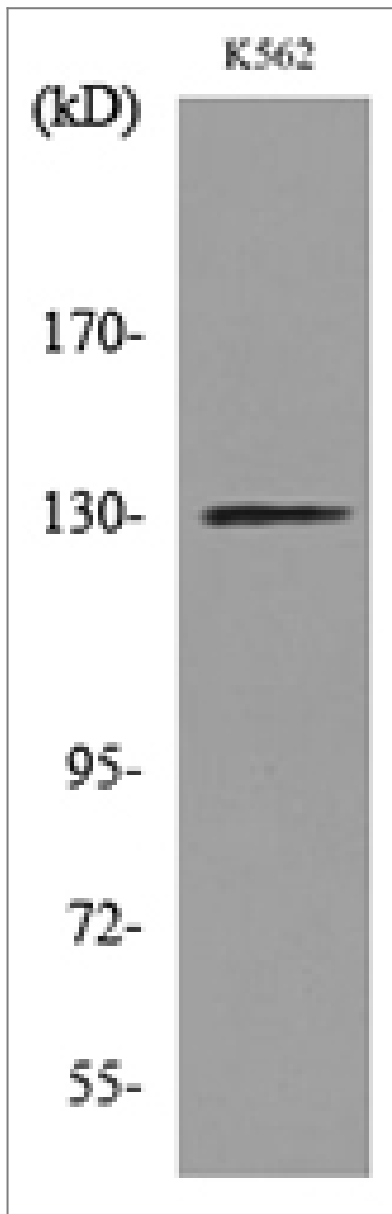
Western Blot analysis of K562 cells using Apaf-1 Polyclonal Antibody. Secondary antibody(catalog#:RS0002) was diluted at 1:20000



Immunohistochemical analysis of paraffin-embedded human-liver, antibody was diluted at 1:100



Immunohistochemical analysis of paraffin-embedded human-lung, antibody was diluted at 1:100



Western blot analysis of lysate from K562 cells, using APAF1 Antibody.

## | Contact information

Orders: order.cn@immunoway.com  
Support: support.cn@immunoway.com  
Telephone: 400-8787-807(China)  
Website: <http://www.immunoway.com.cn>  
Address: 2200 Ringwood Ave San Jose, CA 95131 USA



Please scan the QR code  
to access additional  
product information:

**Apaf-1 Rabbit pAb**

---

For Research Use Only. Not for Use in Diagnostic Procedures.

[Antibody](#) | [ELISA Kits](#) | [Protein](#) | [Reagents](#)