

## SCYL1BP1 Rabbit pAb

CatalogNo: YT5369

### Key Features

#### Host Species

- Rabbit

#### Reactivity

- Human, Mouse, Rat

#### Applications

- WB, ELISA, IHC

#### MW

- 45kD (Observed)

#### Isotype

- IgG

### Storage

**Storage\*** -15°C to -25°C/1 year (Do not lower than -25°C)

**Formulation** Liquid in PBS containing 50% glycerol, 0.5% BSA and 0.02% sodium azide.

### Recommended Dilution Ratios

**WB 1:500-2000**

**IHC 1:50-300**

**ELISA 1:2000-20000**

### Basic Information

**Clonality** Polyclonal

### Immunogen Information

**Immunogen** The antiserum was produced against synthesized peptide derived from the N-terminal region of human GORAB. AA range:1-50

**Specificity** SCYL1BP1 Polyclonal Antibody detects endogenous levels of SCYL1BP1 protein.

### Target Information

**Gene name** GORAB

**Protein Name** RAB6-interacting golgin

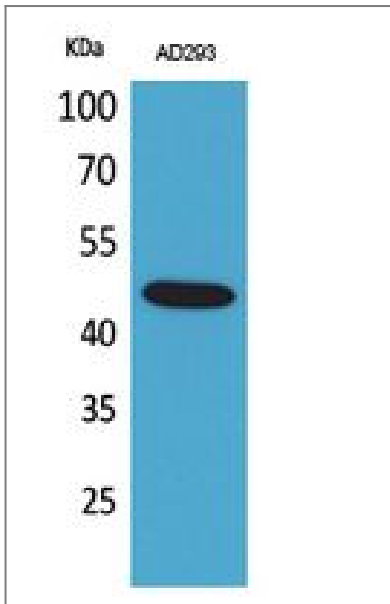
Organism	Gene ID	UniProt ID
Human	<a href="#">92344;</a>	<a href="#">Q5T7V8;</a>
Mouse	<a href="#">98376;</a>	<a href="#">Q8BRM2;</a>
Rat	<a href="#">304923;</a>	<a href="#">B1H222;</a>

**Cellular Localization** Cytoplasm . Golgi apparatus .

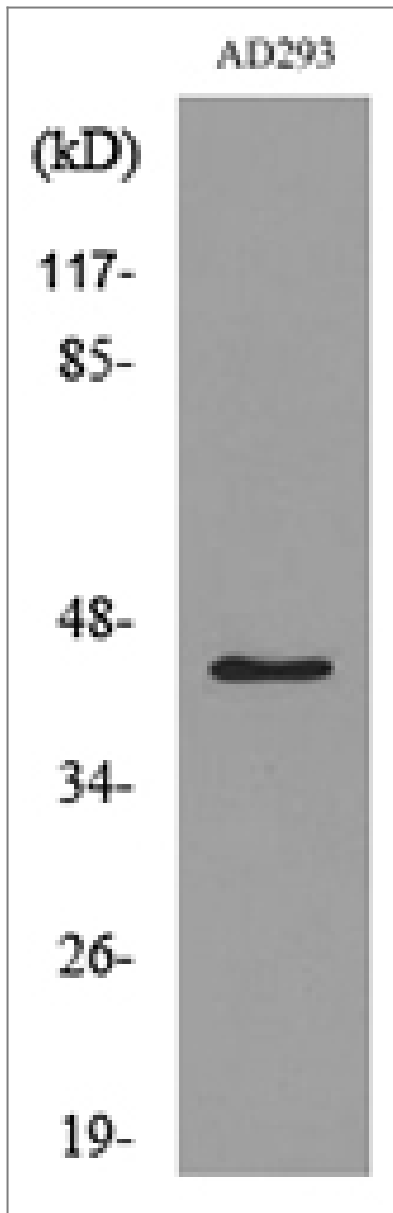
**Tissue specificity** Embryo,Pancreas,Testis,Trachea,

**Function** Caution:It is uncertain whether Met-1 or Met-26 is the initiator.,Disease:Defects in GORAB are the cause of geroderma osteodysplasticum (GO) [MIM:231070]; also known as geroderma osteodysplastica or Walt Disney dwarfism. GO is a rare autosomal recessive disorder characterized by lax, wrinkled skin, joint laxity and a typical face with a prematurely aged appearance. Skeletal signs include severe osteoporosis leading to frequent fractures, malar and mandibular hypoplasia and a variable degree of growth retardation.,similarity:Belongs to the GORAB family.,subunit:Interacts with SCYL1 (By similarity). Interacts with RCHY1 and RAB6A/RAB6.,

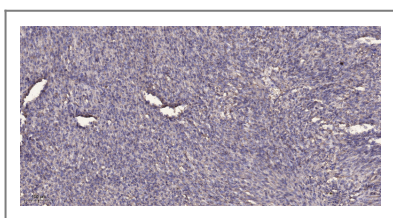
## Validation Data



Western Blot analysis of AD293 cells using SCYL1BP1 Polyclonal Antibody. Secondary antibody(catalog#:RS0002) was diluted at 1:20000



Western blot analysis of lysate from AD293 cells, using GORAB Antibody.



Immunohistochemical analysis of paraffin-embedded human Colon cancer. 1, Antibody was diluted at 1:200(4° overnight). 2, Tris-EDTA,pH9.0 was used for antigen retrieval. 3,Secondary antibody was diluted at 1:200(room temperature, 45min).

## Contact information

Orders: [order.cn@immunoway.com](mailto:order.cn@immunoway.com)  
 Support: [support.cn@immunoway.com](mailto:support.cn@immunoway.com)  
 Telephone: 400-8787-807(China)  
 Website: <http://www.immunoway.com.cn>  
 Address: 2200 Ringwood Ave San Jose, CA 95131 USA



Please scan the QR code to access additional product information:  
**SCYL1BP1 Rabbit pAb**

