

## Bcl-6 Rabbit pAb

CatalogNo: YT5311

### | Key Features

#### Host Species

- Rabbit

#### Reactivity

- Human, Mouse, Rat

#### Applications

- IF, WB, IHC, ELISA

#### MW

- 78kD (Observed)

#### Isotype

- IgG

### | Recommended Dilution Ratios

**IF 1:50-200**

**WB 1:500-1:2000**

**IHC: 1:100-1:300**

**ELISA 1:20000**

**Not yet tested in other applications**

### | Storage

**Storage\*** -15°C to -25°C/1 year(Do not lower than -25°C)

**Formulation** Liquid in PBS containing 50% glycerol, 0.5% BSA and 0.02% sodium azide.

### | Basic Information

**Clonality** Polyclonal

### | Immunogen Information

**Immunogen** The antiserum was produced against synthesized peptide derived from the Internal region of human BCL6. AA range:271-320

**Specificity** Bcl-6 Polyclonal Antibody detects endogenous levels of Bcl-6 protein.

## Target Information

**Gene name** BCL6  
**Protein Name** B-cell lymphoma 6 protein

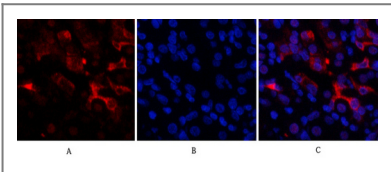
Organism	Gene ID	UniProt ID
Human	<a href="#">604;</a>	<a href="#">P41182;</a>
Mouse	<a href="#">12053;</a>	<a href="#">P41183;</a>

**Cellular Localization** Nucleus .

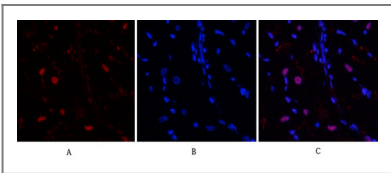
**Tissue specificity** Expressed in germinal center T- and B-cells and in primary immature dendritic cells.

**Function** Disease:A chromosomal aberration involving BCL6 may be a cause of a form of B-cell leukemia. Translocation t(3;11)(q27;q23) with POU2AF1/OBF1.,Disease:A chromosomal aberration involving BCL6 may be a cause of lymphoma. Translocation t(3;4)(q27;p11) with ARHH/TTF.,Disease:Chromosomal aberrations involving BCL6 may be a cause of B-cell non-Hodgkin lymphoma. Translocation t(3;14)(q27;q32); translocation t(3;22)(q27;q11) with immunoglobulin gene regions.,Function:Transcriptional repressor which is required for germinal center formation and antibody affinity maturation. Probably plays an important role in lymphomagenesis.,induction:Down-regulated during maturation of dendritic cells by selective stimuli such as LPS, CD40L and zymosan.,PTM:Phosphorylated by MAPK1 in response to antigen receptor activation. Phosphorylation induces its degradation by ubiquitin/proteasome pathway.,similarity:Contains 1 BTB (POZ) domain.,similarity:Contains 6 C2H2-type zinc fingers.,subunit:Interacts with ZBTB7 and BCL6B (By similarity). Interacts with the catalytic domain of HDAC9.,tissue specificity:Expressed in germinal center T and B cells and in primary immature dendritic cells.,

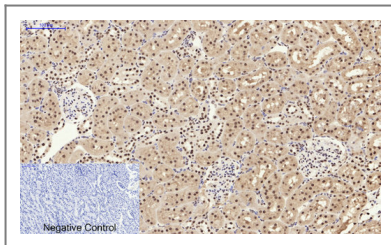
## Validation Data



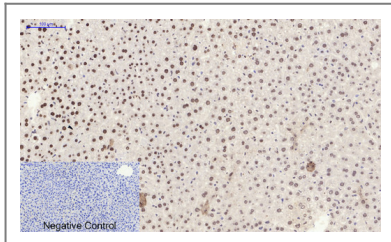
Immunofluorescence analysis of human-stomach tissue. 1,Bcl-6 Polyclonal Antibody(red) was diluted at 1:200(4°C,overnight). 2, Cy3 labeled Secondary antibody was diluted at 1:300(room temperature, 50min).3, Picture B: DAPI(blue) 10min. Picture A:Target. Picture B: DAPI. Picture C: merge of A+B



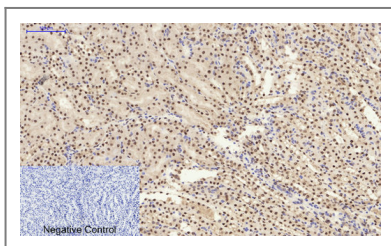
Immunofluorescence analysis of rat-heart tissue. 1,Bcl-6 Polyclonal Antibody(red) was diluted at 1:200(4°C,overnight). 2, Cy3 labeled Secondary antibody was diluted at 1:300(room temperature, 50min).3, Picture B: DAPI(blue) 10min. Picture A:Target. Picture B: DAPI. Picture C: merge of A+B



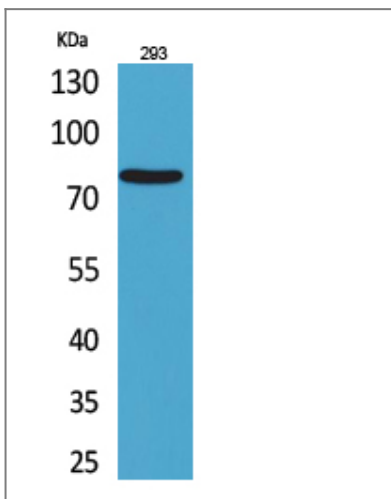
Immunohistochemical analysis of paraffin-embedded Rat-kidney tissue. 1,Bcl-6 Polyclonal Antibody was diluted at 1:200(4°C,overnight). 2, Sodium citrate pH 6.0 was used for antibody retrieval(>98°C,20min). 3,Secondary antibody was diluted at 1:200(room tempeRature, 30min). Negative control was used by secondary antibody only.



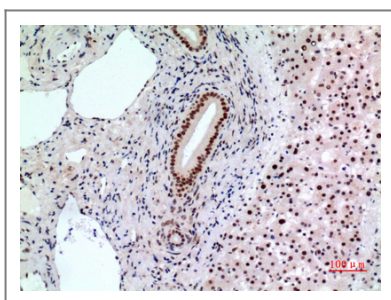
Immunohistochemical analysis of paraffin-embedded Mouse-liver tissue. 1,Bcl-6 Polyclonal Antibody was diluted at 1:200(4°C,overnight). 2, Sodium citrate pH 6.0 was used for antibody retrieval(>98°C,20min). 3,Secondary antibody was diluted at 1:200(room tempeRature, 30min). Negative control was used by secondary antibody only.



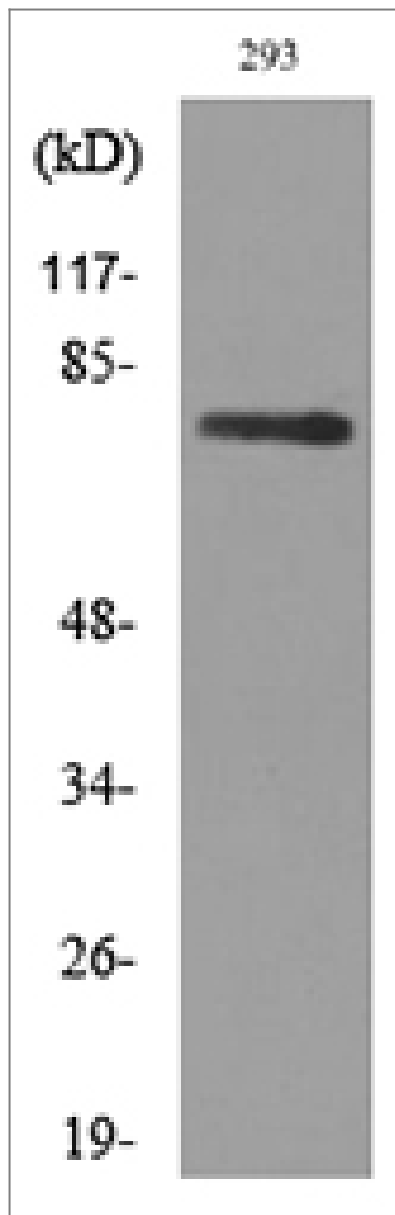
Immunohistochemical analysis of paraffin-embedded Mouse-kidney tissue. 1,Bcl-6 Polyclonal Antibody was diluted at 1:200(4°C,overnight). 2, Sodium citrate pH 6.0 was used for antibody retrieval(>98°C,20min). 3,Secondary antibody was diluted at 1:200(room tempeRature, 30min). Negative control was used by secondary antibody only.



Western Blot analysis of 293 cells using Bcl-6 Polyclonal Antibody. Antibody was diluted at 1:1000. Secondary antibody(catalog#:RS0002) was diluted at 1:20000 cells nucleus extracted by Minute TM Cytoplasmic and Nuclear Fractionation kit (SC-003,Inventbiotech,MN,USA).



Immunohistochemical analysis of paraffin-embedded human-liver, antibody was diluted at 1:100



Western blot analysis of lysate from 293 cells, using BCL6 Antibody.

## Contact information

Orders: [order.cn@immunoway.com](mailto:order.cn@immunoway.com)  
Support: [support.cn@immunoway.com](mailto:support.cn@immunoway.com)  
Telephone: 400-8787-807(China)  
Website: <http://www.immunoway.com.cn>  
Address: 2200 Ringwood Ave San Jose, CA 95131 USA



Please scan the QR code  
to access additional  
product information:  
**Bcl-6 Rabbit pAb**

For Research Use Only. Not for Use in Diagnostic Procedures.

[Antibody](#) | [ELISA Kits](#) | [Protein](#) | [Reagents](#)