

## ARP Rabbit pAb

CatalogNo: YT5309

### Key Features

#### Host Species

- Rabbit

#### Reactivity

- Human, Mouse, Rat

#### Applications

- WB, IHC, IF, ELISA

#### MW

- 20kD (Observed)

#### Isotype

- IgG

### Recommended Dilution Ratios

WB 1:500-1:2000

IHC: 1:100-1:300

ELISA 1:20000

IF 1:50-200

### Storage

#### Storage\*

-15°C to -25°C/1 year (Do not lower than -25°C)

#### Formulation

Liquid in PBS containing 50% glycerol, 0.5% BSA and 0.02% sodium azide.

### Basic Information

#### Clonality

Polyclonal

### Immunogen Information

#### Immunogen

The antiserum was produced against synthesized peptide derived from the Internal region of human MANF. AA range:11-60

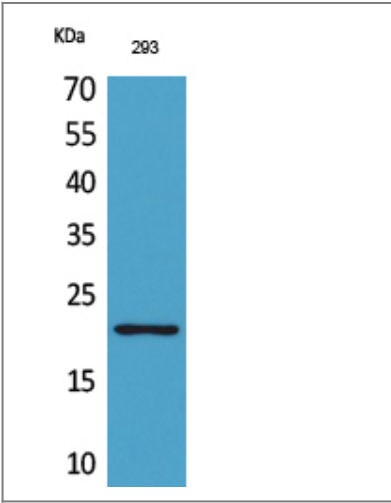
#### Specificity

ARP Polyclonal Antibody detects endogenous levels of ARP protein.

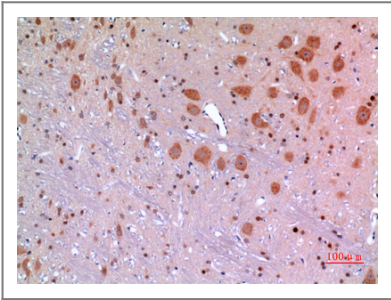
### Target Information

|                       |  |                        |                          |
|-----------------------|--|------------------------|--------------------------|
| Gene name             | MANF   |                        |                          |
| Protein Name          | Mesencephalic astrocyte-derived neurotrophic factor  |                        |                          |
|                       | Organism   | Gene ID                | UniProt ID               |
|                       | Human  | <a href="#">7873</a> ; | <a href="#">P55145</a> ; |
|                       | Mouse  |                        | <a href="#">Q9CXI5</a> ; |
|                       | Rat  |                        | <a href="#">P0C5H9</a> ; |
| Cellular Localization | Secreted . Endoplasmic reticulum lumen . Sarcoplasmic reticulum lumen . Retained in the endoplasmic reticulum (ER), and sarcoplasmic reticulum (SR) under normal conditions (PubMed:22637475). Up-regulated and secreted by the ER/SR in response to ER stress and hypoxia (PubMed:22637475, PubMed:29497057). . |                        |                          |
| Tissue specificity    | Testis,  |                        |                          |
| Function              | response to unfolded protein, response to organic substance, response to protein stimulus,   |                        |                          |

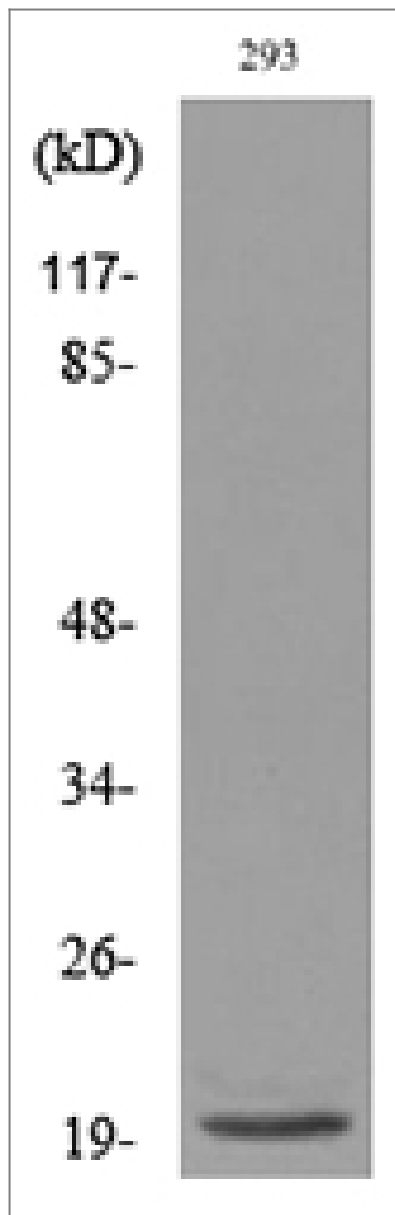
Validation Data



Western Blot analysis of 293 cells using ARP Polyclonal Antibody. Secondary antibody(catalog#:RS0002) was diluted at 1:20000



Immunohistochemical analysis of paraffin-embedded rat-brain, antibody was diluted at 1:100



Western blot analysis of lysate from 293 cells, using MANF Antibody.

## Contact information

Orders: order.cn@immunoway.com  
Support: support.cn@immunoway.com  
Telephone: 400-8787-807(China)  
Website: <http://www.immunoway.com.cn>  
Address: 2200 Ringwood Ave San Jose, CA 95131 USA



Please scan the QR code  
to access additional  
product information:  
**ARP Rabbit pAb**

For Research Use Only. Not for Use in Diagnostic Procedures.

[Antibody](#) | [ELISA Kits](#) | [Protein](#) | [Reagents](#)