

## BMP-3A Rabbit pAb

CatalogNo: YT5303

### Key Features

#### Host Species

- Rabbit

#### Reactivity

- Human, Mouse, Rat

#### Applications

- WB, IHC, IF, ELISA

#### MW

- 53kD (Observed)

#### Isotype

- IgG

### Recommended Dilution Ratios

WB 1:500-1:2000

IHC: 1:100-1:300

ELISA 1:20000

IF 1:50-200

### Storage

#### Storage\*

-15°C to -25°C/1 year (Do not lower than -25°C)

#### Formulation

Liquid in PBS containing 50% glycerol, 0.5% BSA and 0.02% sodium azide.

### Basic Information

#### Clonality

Polyclonal

### Immunogen Information

#### Immunogen

The antiserum was produced against synthesized peptide derived from the C-terminal region of human BMP3. AA range: 421-470

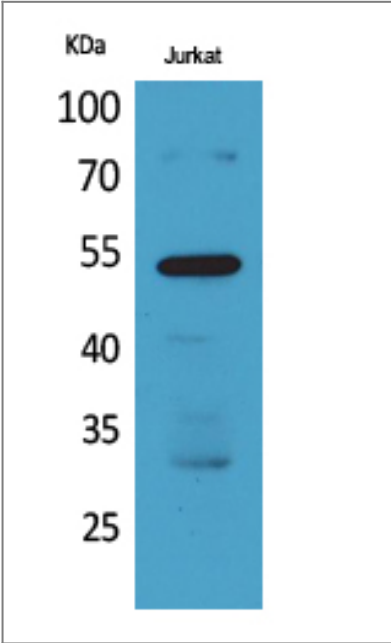
#### Specificity

BMP-3A Polyclonal Antibody detects endogenous levels of BMP-3A protein.

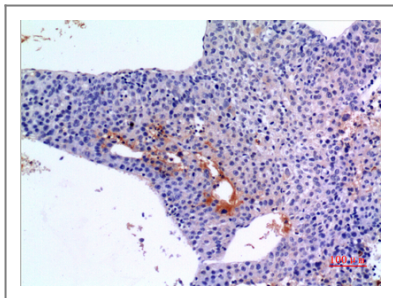
### Target Information

Gene name	BMP3		
Protein Name	Bone morphogenetic protein 3		
	Organism	Gene ID	UniProt ID
	Human	<a href="#">651</a> ;	<a href="#">P12645</a> ;
	Mouse	<a href="#">110075</a> ;	<a href="#">Q8BHE5</a> ;
	Rat	<a href="#">25667</a> ;	<a href="#">P49002</a> ;
Cellular Localization	Secreted.		
Tissue specificity	Expressed in adult and fetal cartilage.		
Function	Function:Negatively regulates bone density. Antagonizes the ability of certain osteogenic BMPs to induce osteoprogenitor differentiation and ossification.,induction:Highly expressed in fracture tissue, particularly in osteoblasts, osteoclasts and chondroblasts.,online information:Bone morphogenetic protein 3 entry,similarity:Belongs to the TGF-beta family.,subunit:Homodimer; disulfide-linked.,tissue specificity:Expressed in adult and fetal cartilage.,		

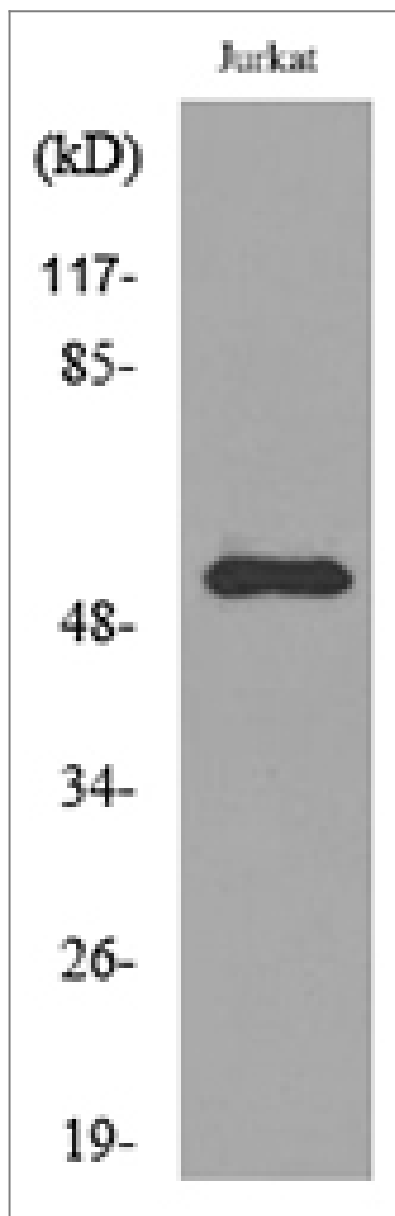
| Validation Data



Western Blot analysis of Jurkat cells using BMP-3A Polyclonal Antibody. Antibody was diluted at 1:500. Secondary antibody(catalog#:RS0002) was diluted at 1:20000



Immunohistochemical analysis of paraffin-embedded human-liver-cancer, antibody was diluted at 1:100



Western blot analysis of lysate from Jurkat cells, using BMP3 Antibody.

## Contact information

Orders: [order.cn@immunoway.com](mailto:order.cn@immunoway.com)  
 Support: [support.cn@immunoway.com](mailto:support.cn@immunoway.com)  
 Telephone: 400-8787-807(China)  
 Website: <http://www.immunoway.com.cn>  
 Address: 2200 Ringwood Ave San Jose, CA 95131 USA



Please scan the QR code  
 to access additional  
 product information:  
**BMP-3A Rabbit pAb**

