

PSP Rabbit pAb

CatalogNo: YT5295

Key Features

Host Species

- Rabbit

Reactivity

- Human, Mouse, Rat

Applications

- WB, ELISA, IHC

MW

- 16kD (Observed)

Isotype

- IgG

Recommended Dilution Ratios

WB 1:500-2000

IHC 1:50-300

ELISA 1:2000-20000

Storage

Storage* -15°C to -25°C/1 year (Do not lower than -25°C)

Formulation Liquid in PBS containing 50% glycerol, 0.5% BSA and 0.02% sodium azide.

Basic Information

Clonality Polyclonal

Immunogen Information

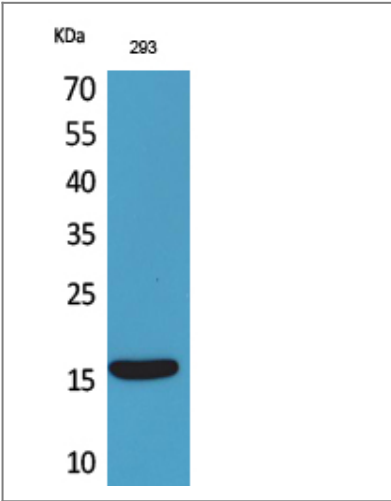
Immunogen The antiserum was produced against synthesized peptide derived from the C-terminal region of human PSPN. AA range: 101-150

Specificity PSP Polyclonal Antibody detects endogenous levels of PSP protein.

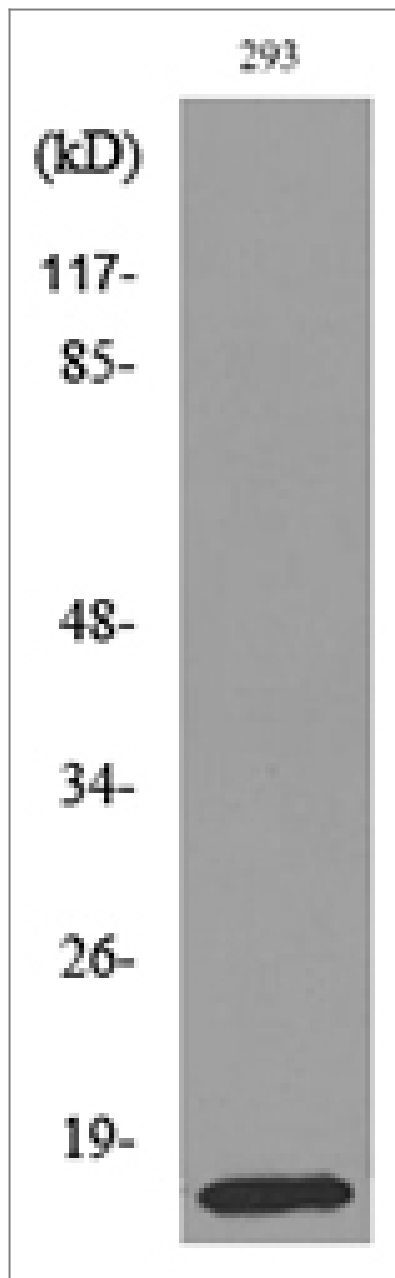
Target Information

Gene name	PSPN		
Protein Name	Persephin		
	Organism	Gene ID	UniProt ID
	Human	5623 ;	O60542 ;
	Mouse		O70300 ;
	Rat	25525 ;	O70301 ;
Cellular Localization	Secreted.		
Function	Function:Exhibits neurotrophic activity on mesencephalic dopaminergic and motor neurons.,similarity:Belongs to the TGF-beta family. GDNF subfamily.,subunit:Homodimer; disulfide-linked.,		

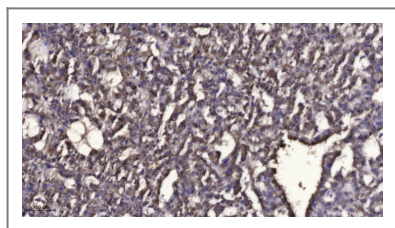
Validation Data



Western Blot analysis of 293 cells using PSP Polyclonal Antibody. Secondary antibody(catalog#:RS0002) was diluted at 1:20000



Western blot analysis of lysate from 293 cells, using PSPN Antibody.



Immunohistochemical analysis of paraffin-embedded human liver cancer. 1, Antibody was diluted at 1:200(4° overnight). 2, Tris-EDTA,pH9.0 was used for antigen retrieval. 3,Secondary antibody was diluted at 1:200(room temperature, 45min).

Contact information

Orders: order.cn@immunoway.com
 Support: support.cn@immunoway.com
 Telephone: 400-8787-807(China)
 Website: <http://www.immunoway.com.cn>
 Address: 2200 Ringwood Ave San Jose, CA 95131 USA



Please scan the QR code to access additional product information:
PSP Rabbit pAb

