

Ob-R Rabbit pAb

CatalogNo: YT5282

Orthogonal Validated 

Key Features

Host Species

- Rabbit

Reactivity

- Human,Rat,Mouse,

Applications

- WB,ELISA

MW

- 132kD (Observed)

Isotype

- IgG

Recommended Dilution Ratios

WB 1:500-1:2000**ELISA 1:20000****Not yet tested in other applications.**

Storage

Storage* -15°C to -25°C/1 year(Do not lower than -25°C)**Formulation** Liquid in PBS containing 50% glycerol, 0.5% BSA and 0.02% sodium azide.

Basic Information

Clonality Polyclonal

Immunogen Information

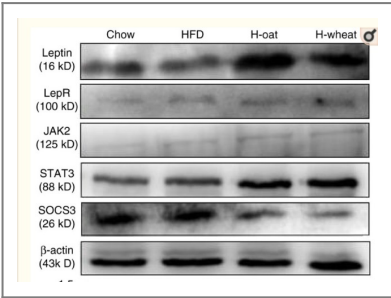
Immunogen Synthesized peptide derived from Leptin receptor at AA range: 791-840**Specificity** Ob-R Polyclonal Antibody detects endogenous levels of Ob-R protein.

Target Information

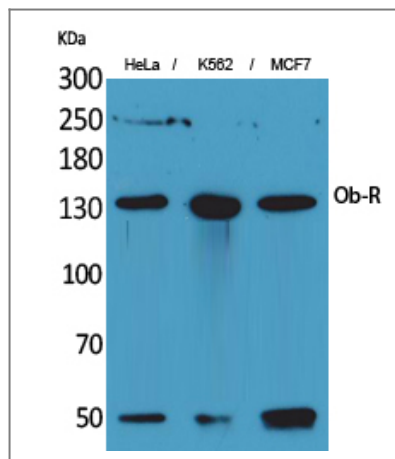
Gene name LEPR OBR

| | | | |
|------------------------------|--|-------------------------|--------------------------|
| Protein Name | Leptin receptor | | |
| | Organism | Gene ID | UniProt ID |
| | Human | 3953 ; | P48357 ; |
| | Mouse | 16847 ; | P48356 ; |
| | Rat | 24536 ; | Q62959 ; |
| Cellular Localization | Cell membrane ; Single-pass type I membrane protein . Basolateral cell membrane . ; [Isoform E]: Secreted . | | |
| Tissue specificity | Isoform A is expressed in fetal liver and in hematopoietic tissues and choroid plexus. In adults highest expression in heart, liver, small intestine, prostate and ovary. Low level in lung and kidney. Isoform B is highly expressed in hypothalamus, but also in skeletal muscle. Detected in fundic and antral epithelial cells of the gastric mucosa (PubMed:19159218). Isoform B and isoform A are expressed by NK cells (at protein level) (PubMed:12504075). | | |
| Function | <p>Domain:The box 1 motif is required for JAK interaction and/or activation.,Domain:The cytoplasmic domain may be essential for intracellular signal transduction by activation of JAK tyrosine kinase and STATs.,Domain:The WSXWS motif appears to be necessary for proper protein folding and thereby efficient intracellular transport and cell-surface receptor binding.,Function:Receptor for obesity factor (leptin). On ligand binding, mediates signaling through JAK2/STAT3. Involved in the regulation of fat metabolism and, in a hematopoietic pathway, required for normal lymphopoiesis. May play a role in reproduction. Can also mediate the ERK/FOS signaling pathway.,PTM:On ligand binding, phosphorylated on two conserved C-terminal tyrosine residues (isoform B only) by JAK2. Tyr-986 is required for complete binding and activation of PTPN11, ERK/FOS activation and, for interaction with SOCS3 (By similarity). Phosphorylation on Tyr-1141 is required for STAT3 binding/activation.,similarity:Belongs to the type I cytokine receptor family. Type 2 subfamily.,similarity:Contains 1 Ig-like (immunoglobulin-like) domain.,similarity:Contains 4 fibronectin type-III domains.,subunit:On leptin stimulation, homodimerizes. The phosphorylated receptor binds a number of SH2 domain-containing proteins such as STAT3, PTPN11, and SOCS3 (By similarity). Interaction with SOCS3 inhibits LRb signaling.,tissue specificity:Isoform A is expressed in fetal liver and in hematopoietic tissues and choroid plexus. In adults highest expression in heart, liver, small intestine, prostate and ovary. Low level in lung and kidney. Isoform B is highly expressed in hypothalamus.,</p> | | |

Validation Data



Zhang, Ru, et al. "Effects of cereal fiber on leptin resistance and sensitivity in C57BL/6J mice fed a high-fat/cholesterol diet." Food & nutrition research 60.1 (2016): 31690.



Western Blot analysis of HeLa, K562, MCF7 cells using Ob-R Polyclonal Antibody. Antibody was diluted at 1:1000. Secondary antibody(catalog#:RS0002) was diluted at 1:20000

Contact information

Orders: order.cn@immunoway.com
 Support: support.cn@immunoway.com
 Telephone: 400-8787-807(China)
 Website: <http://www.immunoway.com.cn>
 Address: 2200 Ringwood Ave San Jose, CA 95131 USA



Please scan the QR code to access additional product information:
Ob-R Rabbit pAb

For Research Use Only. Not for Use in Diagnostic Procedures.

[Antibody](#) | [ELISA Kits](#) | [Protein](#) | [Reagents](#)