

CD161 Rabbit pAb

CatalogNo: YT5276

Key Features

Host Species

- Rabbit

Reactivity

- Human,Rat,Mouse,

Applications

- WB,ELISA

MW

- 25kD (Observed)

Isotype

- IgG

Recommended Dilution Ratios

WB 1:500-1:2000

ELISA 1:20000

Not yet tested in other applications.

Storage

Storage*

-15°C to -25°C/1 year(Do not lower than -25°C)

Formulation

Liquid in PBS containing 50% glycerol, 0.5% BSA and 0.02% sodium azide.

Basic Information

Clonality

Polyclonal

Immunogen Information

Immunogen

The antiserum was produced against synthesized peptide derived from the Internal region of human KLRB1. AA range:101-150

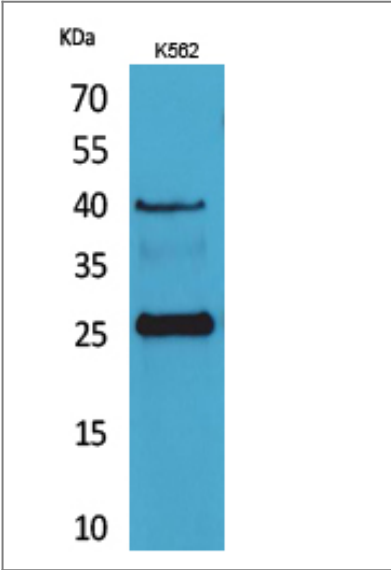
Specificity

CD161 Polyclonal Antibody detects endogenous levels of CD161 protein.

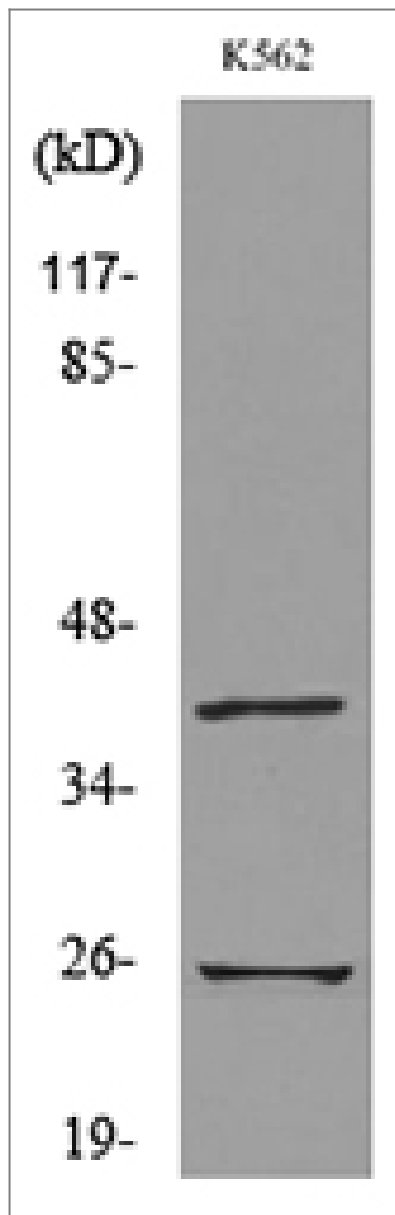
Target Information

Gene name	KLRB1		
Protein Name	Killer cell lectin-like receptor subfamily B member 1		
	Organism	Gene ID	UniProt ID
	Human	3820 ;	Q12918 ;
	Mouse	100043861 ;	Q0ZUP1 ;
	Rat	689817 ;	Q0ZUP0 ;
Cellular Localization	Membrane ; Single-pass type II membrane protein .		
Tissue specificity	Expressed in a subset of NK cells predominantly in intestinal epithelium and liver. Detected in peripheral blood T-cells and preferentially in adult T-cells with a memory antigenic phenotype.		
Function	Function:Plays an inhibitory role on natural killer (NK) cells cytotoxicity. Activation results in specific acid sphingomyelinase/SMPD1 stimulation with subsequent marked elevation of intracellular ceramide. Activation also leads to AKT1/PKB and RPS6KA1/RSK1 kinases stimulation as well as markedly enhanced T-cell proliferation induced by anti-CD3. Acts as a lectin that binds to the terminal carbohydrate Gal-alpha(1,3)Gal epitope as well as to the N-acetyllactosamine epitope. Binds also to CLEC2D/LLT1 as a ligand and inhibits NK cell-mediated cytotoxicity as well as interferon-gamma secretion in target cells.,induction:By IL12 in NK cells.,online information:NKRP1,PTM:N-glycosylated. Contains sialic acid residues.,similarity:Contains 1 C-type lectin domain.,subunit:Homodimer; disulfide-linked. Interacts with acid sphingomyelinase/SMPD1.,tissue specificity:Expressed in a subset of NK cells predominantly in intestinal epithelium and liver. Detected in peripheral blood T-cells and preferentially in adult T-cells with a memory antigenic phenotype.,		

Validation Data



Western Blot analysis of K562 cells using CD161 Polyclonal Antibody. Secondary antibody(catalog#:RS0002) was diluted at 1:20000



Western blot analysis of lysate from K562 cells, using KLRB1 Antibody.

Contact information

Orders: order.cn@immunoway.com
Support: support.cn@immunoway.com
Telephone: 400-8787-807(China)
Website: <http://www.immunoway.com.cn>
Address: 2200 Ringwood Ave San Jose, CA 95131 USA



Please scan the QR code
to access additional
product information:
CD161 Rabbit pAb

For Research Use Only. Not for Use in Diagnostic Procedures.

[Antibody](#) | [ELISA Kits](#) | [Protein](#) | [Reagents](#)