

## CD207 Rabbit pAb

CatalogNo: YT5275

### Key Features

#### Host Species

- Rabbit

#### Reactivity

- Human, Mouse

#### Applications

- WB, ELISA

#### MW

- 38kD (Observed)

#### Isotype

- IgG

### Recommended Dilution Ratios

**WB 1:500-1:2000**

**ELISA 1:20000**

**Not yet tested in other applications.**

### Storage

#### Storage\*

-15°C to -25°C/1 year (Do not lower than -25°C)

#### Formulation

Liquid in PBS containing 50% glycerol, 0.5% BSA and 0.02% sodium azide.

### Basic Information

#### Clonality

Polyclonal

### Immunogen Information

#### Immunogen

The antiserum was produced against synthesized peptide derived from the Internal region of human CD207. AA range: 61-110

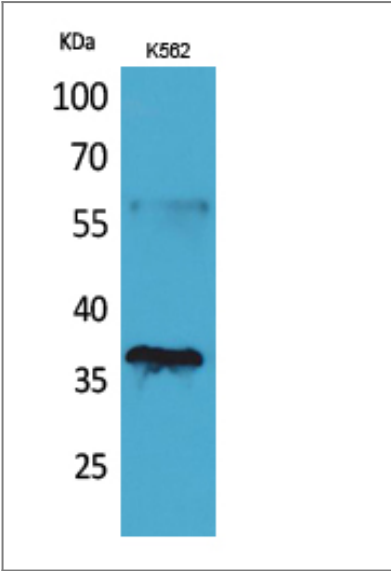
#### Specificity

CD207 Polyclonal Antibody detects endogenous levels of CD207 protein.

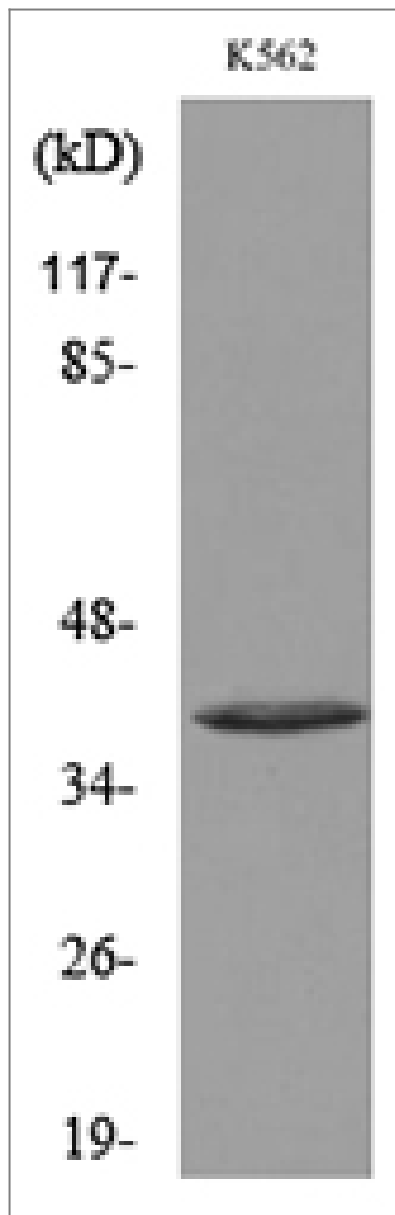
### Target Information

Gene name	CD207		
Protein Name	C-type lectin domain family 4 member K		
	Organism	Gene ID	UniProt ID
	Human	<a href="#">50489</a> ;	<a href="#">Q9UJ71</a> ;
	Mouse	<a href="#">246278</a> ;	<a href="#">Q8VBX4</a> ;
Cellular Localization	Membrane ; Single-pass type II membrane protein . Found in Birbeck granules (BGs), which are organelles consisting of superimposed and zippered membranes.		
Tissue specificity	Exclusively expressed by Langerhans cells. Expressed in astrocytoma and malignant ependymoma, but not in normal brain tissues.		
Function	Function:Calcium-dependent lectin displaying mannose-binding specificity, Induces the formation of Birbeck granules (BGs); is a potent regulator of membrane superimposition and zippering.,online information:Langerin,similarity:Contains 1 C-type lectin domain.,subcellular location:Found in Birbeck granules (BGs), which are organelles consisting of superimposed and zippered membranes.,tissue specificity:Exclusively expressed by Langerhans cells.,		

Validation Data



Western Blot analysis of K562 cells using CD207 Polyclonal Antibody. Secondary antibody(catalog#:RS0002) was diluted at 1:20000



Western blot analysis of lysate from K562 cells, using CD207 Antibody.

## Contact information

Orders: [order.cn@immunoway.com](mailto:order.cn@immunoway.com)  
Support: [support.cn@immunoway.com](mailto:support.cn@immunoway.com)  
Telephone: 400-8787-807(China)  
Website: <http://www.immunoway.com.cn>  
Address: 2200 Ringwood Ave San Jose, CA 95131 USA



Please scan the QR code  
to access additional  
product information:  
**CD207 Rabbit pAb**

For Research Use Only. Not for Use in Diagnostic Procedures.

[Antibody](#) | [ELISA Kits](#) | [Protein](#) | [Reagents](#)