

## CD32-B/C Rabbit pAb

CatalogNo: YT5246

### Key Features

#### Host Species

- Rabbit

#### Reactivity

- Human

#### Applications

- WB,ELISA

#### MW

- 35kD (Observed)

#### Isotype

- IgG

### Recommended Dilution Ratios

**WB 1:500-1:2000**

**ELISA 1:20000**

**Not yet tested in other applications.**

### Storage

**Storage\*** -15°C to -25°C/1 year(Do not lower than -25°C)

**Formulation** Liquid in PBS containing 50% glycerol, 0.5% BSA and 0.02% sodium azide.

### Basic Information

**Clonality** Polyclonal

### Immunogen Information

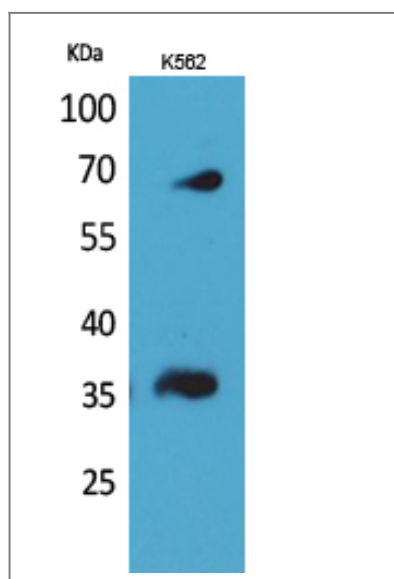
**Immunogen** The antiserum was produced against synthesized peptide derived from the Internal region of human FCGR2B/C. AA range:141-190

**Specificity** CD32-B/C Polyclonal Antibody detects endogenous levels of CD32-B/C protein.

### Target Information

<b>Gene name</b>	FCGR2B/FCGR2C		
<b>Protein Name</b>	Low affinity immunoglobulin gamma Fc region receptor II-b/Low affinity immunoglobulin gamma Fc region receptor II-c		
	<b>Organism</b>	<b>Gene ID</b>	<b>UniProt ID</b>
	Human	<a href="#">2213</a> ;	<a href="#">P31994</a> ;
<b>Cellular Localization</b>	Cell membrane; Single-pass type I membrane protein.		
<b>Tissue specificity</b>	Is the most broadly distributed Fc-gamma-receptor. Expressed in monocyte, neutrophils, macrophages, basophils, eosinophils, Langerhans cells, B-cells, platelets cells and placenta (endothelial cells). Not detected in natural killer cells.		
<b>Function</b>	immune response,		

## Validation Data



Western Blot analysis of K562 cells using CD32-B/C Polyclonal Antibody. Secondary antibody(catalog#:R50002) was diluted at 1:20000

## Contact information

Orders: [order.cn@immunoway.com](mailto:order.cn@immunoway.com)  
 Support: [support.cn@immunoway.com](mailto:support.cn@immunoway.com)  
 Telephone: 400-8787-807(China)  
 Website: <http://www.immunoway.com.cn>  
 Address: 2200 Ringwood Ave San Jose, CA 95131 USA



Please scan the QR code to access additional product information:  
**CD32-B/C Rabbit pAb**

