

## IL-5R $\alpha$ Rabbit pAb

CatalogNo: YT5214

### Key Features

#### Host Species

- Rabbit

#### Reactivity

- Human, Mouse

#### Applications

- WB, IHC, IF, ELISA

#### MW

- 47kD (Observed)

#### Isotype

- IgG

### Recommended Dilution Ratios

**WB 1:500-1:2000**

**IHC: 1:100-300**

**ELISA 1:20000**

**IF 1:50-200**

### Storage

#### Storage\*

-15°C to -25°C/1 year (Do not lower than -25°C)

#### Formulation

Liquid in PBS containing 50% glycerol, 0.5% BSA and 0.02% sodium azide.

### Basic Information

#### Clonality

Polyclonal

### Immunogen Information

#### Immunogen

The antiserum was produced against synthesized peptide derived from the N-terminal region of human IL5RA. AA range: 41-90

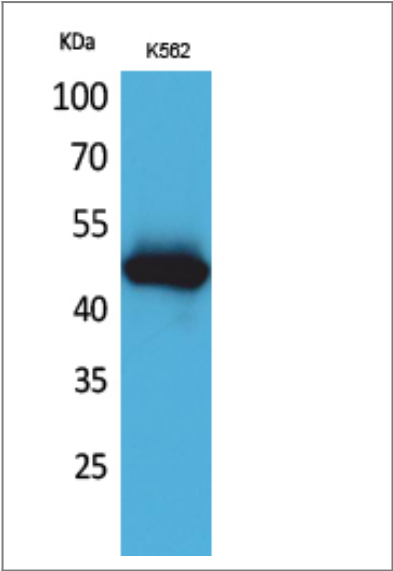
#### Specificity

IL-5R $\alpha$  Polyclonal Antibody detects endogenous levels of IL-5R $\alpha$  protein.

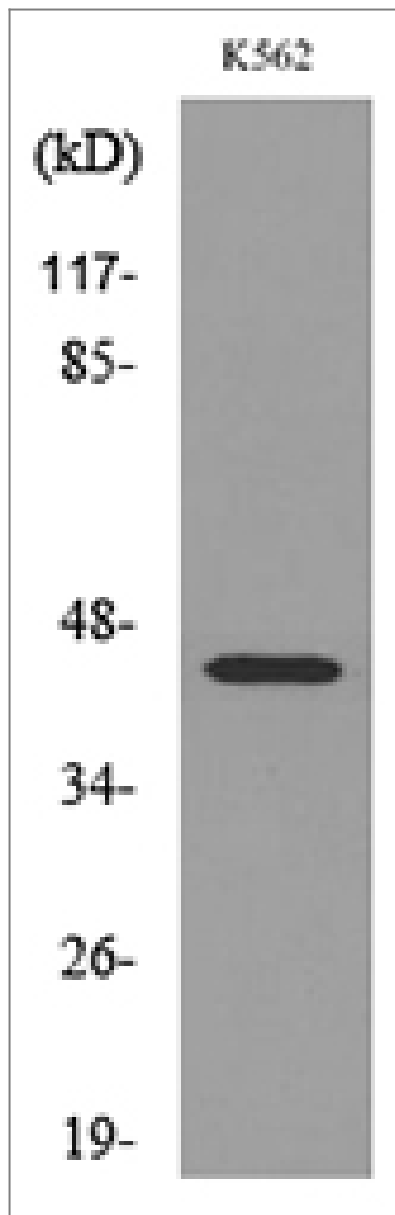
### Target Information

Gene name	IL5RA		
Protein Name	Interleukin-5 receptor subunit alpha		
	Organism	Gene ID	UniProt ID
	Human	<a href="#">3568</a> ;	<a href="#">Q01344</a> ;
	Mouse		<a href="#">P21183</a> ;
Cellular Localization	Membrane; Single-pass type I membrane protein.		
Tissue specificity	Expressed on eosinophils and basophils.		
Function	Domain:The box 1 motif is required for JAK interaction and/or activation.,Domain:The WSXWS motif appears to be necessary for proper protein folding and thereby efficient intracellular transport and cell-surface receptor binding.,Function:This is the receptor for interleukin-5. The alpha chain binds to IL5.,similarity:Belongs to the type I cytokine receptor family. Type 5 subfamily.,subunit:Heterodimer of an alpha and a beta subunit. The beta subunit is common to the IL3, IL5 and GM-CSF receptors. Interacts with SDCBP.,tissue specificity:Expressed on eosinophils and basophils.,		

| Validation Data



Western Blot analysis of K562 cells using IL-5Rα Polyclonal Antibody. Secondary antibody(catalog#:RS0002) was diluted at 1:20000



Western blot analysis of lysate from K562 cells, using IL5RA Antibody.

## Contact information

Orders: order.cn@immunoway.com  
Support: support.cn@immunoway.com  
Telephone: 400-8787-807(China)  
Website: <http://www.immunoway.com.cn>  
Address: 2200 Ringwood Ave San Jose, CA 95131 USA



Please scan the QR code  
to access additional  
product information:  
**IL-5R $\alpha$  Rabbit pAb**

For Research Use Only. Not for Use in Diagnostic Procedures.

[Antibody](#) | [ELISA Kits](#) | [Protein](#) | [Reagents](#)