

CYPA Rabbit pAb

CatalogNo: YT5197

Key Features

Host Species

- Rabbit

Reactivity

- Human, Mouse, Rat

Applications

- WB, IHC, IF, ELISA

MW

- 18kD (Observed)

Isotype

- IgG

Recommended Dilution Ratios

WB 1:500-1:2000**IHC: 1:100-300****ELISA 1:20000****IF 1:50-200**

Storage

Storage*

-15°C to -25°C/1 year (Do not lower than -25°C)

Formulation

Liquid in PBS containing 50% glycerol, 0.5% BSA and 0.02% sodium azide.

Basic Information

Clonality

Polyclonal

Immunogen Information

Immunogen

The antiserum was produced against synthesized peptide derived from the Internal region of human PPIA. AA range: 51-100

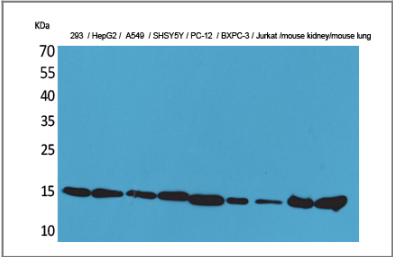
Specificity

CyPA Polyclonal Antibody detects endogenous levels of CyPA protein.

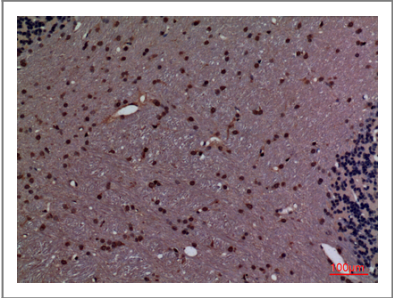
Target Information

Gene name	PPIA		
Protein Name	Peptidyl-prolyl cis-trans isomerase A		
	Organism	Gene ID	UniProt ID
	Human	5478;	P62937;
	Mouse	268373;	P17742;
	Rat	100360977;	P10111;
Cellular Localization	Cytoplasm . Secreted . Nucleus . Secretion occurs in response to oxidative stress in vascular smooth muscle through a vesicular secretory pathway that includes Rho GTPase signaling, actin remodeling, and myosin II activation. .		
Tissue specificity	Blood,Bone marrow,Brain,Cajal-Retzius cell,Cervix,Colon,Epithelium,Fetal br		
Function	Catalytic activity:Peptidylproline (omega=180) = peptidylproline (omega=0).,enzyme regulation:Binds cyclosporin A (CsA). CsA mediates some of its effects via an inhibitory action on PPIase.,Function:PPIases accelerate the folding of proteins.,Function:PPIases accelerate the folding of proteins. It catalyzes the cis-trans isomerization of proline imidic peptide bonds in oligopeptides.,online information:Cyclophilin entry,similarity:Belongs to the cyclophilin-type PPIase family.,similarity:Belongs to the cyclophilin-type PPIase family. PPIase A subfamily.,similarity:Contains 1 PPIase cyclophilin-type domain.,subunit:Interacts with HIV-1 Capsid protein.,		

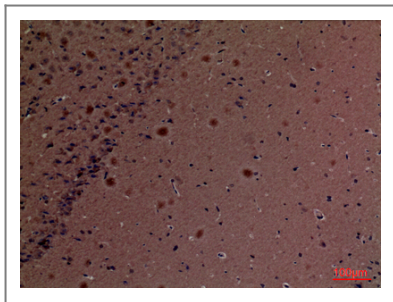
| Validation Data



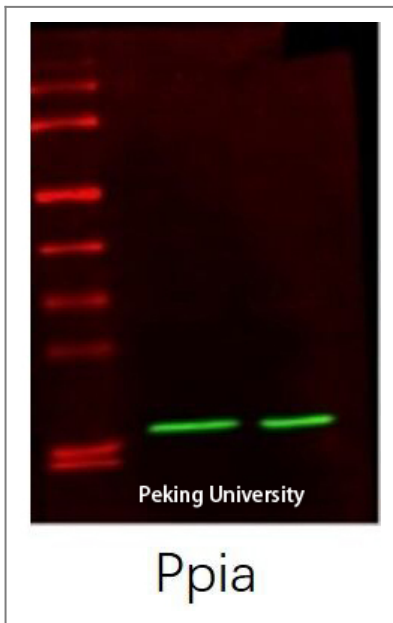
Western Blot analysis of 293, HepG2, A549, SHSY5Y, PC-12, BXP-3, Jurkat, mouse kidney, mouse lung cells using CyPA Polyclonal Antibody. Secondary antibody(catalog#:RS0002) was diluted at 1:20000



Immunohistochemical analysis of paraffin-embedded rat-brain, antibody was diluted at 1:100



Immunohistochemical analysis of paraffin-embedded mouse-brain, antibody was diluted at 1:100



The picture was kindly provided by our customer

Contact information

Orders: order.cn@immunoway.com
Support: support.cn@immunoway.com
Telephone: 400-8787-807(China)
Website: <http://www.immunoway.com.cn>
Address: 2200 Ringwood Ave San Jose, CA 95131 USA



Please scan the QR code to access additional product information:
CYPA Rabbit pAb

For Research Use Only. Not for Use in Diagnostic Procedures.

[Antibody](#) | [ELISA Kits](#) | [Protein](#) | [Reagents](#)