

Hepassocin Rabbit pAb

CatalogNo: YT5127

Key Features

Host Species

- Rabbit

Reactivity

- Human, Mouse, Rat

Applications

- WB, IHC, IF, ELISA

MW

- 36kD (Observed)

Isotype

- IgG

Recommended Dilution Ratios

WB 1:500-1:2000

IHC: 1:100-300

ELISA 1:20000

IF 1:50-200

Storage

Storage*

-15°C to -25°C/1 year (Do not lower than -25°C)

Formulation

Liquid in PBS containing 50% glycerol, 0.5% BSA and 0.02% sodium azide.

Basic Information

Clonality

Polyclonal

Immunogen Information

Immunogen

Synthesized peptide derived from the Internal region of human Hepassocin.

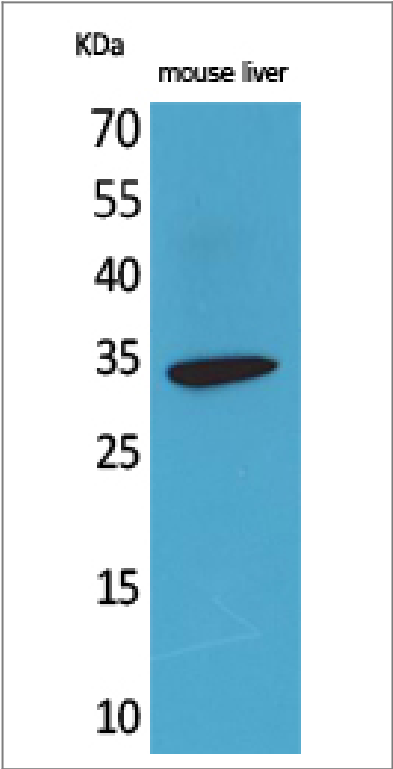
Specificity

Hepassocin Polyclonal Antibody detects endogenous levels of Hepassocin protein.

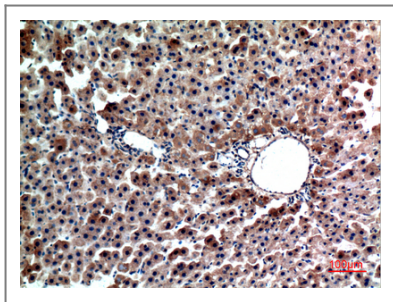
Target Information

Gene name	FGL1		
Protein Name	Fibrinogen-like protein 1		
	Organism	Gene ID	UniProt ID
	Human	2267;	Q08830;
	Mouse	234199;	Q71KU9;
	Rat		Q5M8C6;
Cellular Localization	Secreted . Secreted in the blood plasma. .		
Tissue specificity	Under normal conditions, liver-specific.		
Function	Function:Has hepatocyte mitogenic activity.,similarity:Contains 1 fibrinogen C-terminal domain.,subunit:Homodimer.,tissue specificity:Liver specific.,		

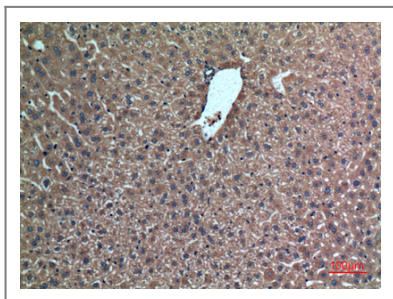
Validation Data



Western Blot analysis of mouse liver cells using Hepassocin Polyclonal Antibody. Secondary antibody(catalog#:RS0002) was diluted at 1:20000



Immunohistochemical analysis of paraffin-embedded rat-liver, antibody was diluted at 1:100



Immunohistochemical analysis of paraffin-embedded mouse-liver, antibody was diluted at 1:100

Contact information

Orders: order.cn@immunoway.com
Support: support.cn@immunoway.com
Telephone: 400-8787-807(China)
Website: <http://www.immunoway.com.cn>
Address: 2200 Ringwood Ave San Jose, CA 95131 USA



Please scan the QR code
to access additional
product information:
**Hepassocin Rabbit
pAb**

For Research Use Only. Not for Use in Diagnostic Procedures.

[Antibody](#) | [ELISA Kits](#) | [Protein](#) | [Reagents](#)