

Cathepsin L Rabbit pAb

CatalogNo: YT5124

Orthogonal Validated 

Key Features

Host Species

- Rabbit

Reactivity

- Human,Rat,Mouse,

Applications

- WB,IHC,IF,ELISA

MW

- 37kD (Observed)

Isotype

- IgG

Recommended Dilution Ratios

WB 1:500-1:2000

IHC: 1:100-300

ELISA 1:20000

IF 1:50-200

Storage

Storage*

-15°C to -25°C/1 year(Do not lower than -25°C)

Formulation

Liquid in PBS containing 50% glycerol, 0.5% BSA and 0.02% sodium azide.

Basic Information

Clonality

Polyclonal

Immunogen Information

Immunogen

Synthesized peptide derived from the Internal region of human Cathepsin L.

Specificity

Cathepsin L Polyclonal Antibody detects endogenous levels of Cathepsin L protein.

Target Information

Gene name CTSL1

Protein Name Cathepsin L1

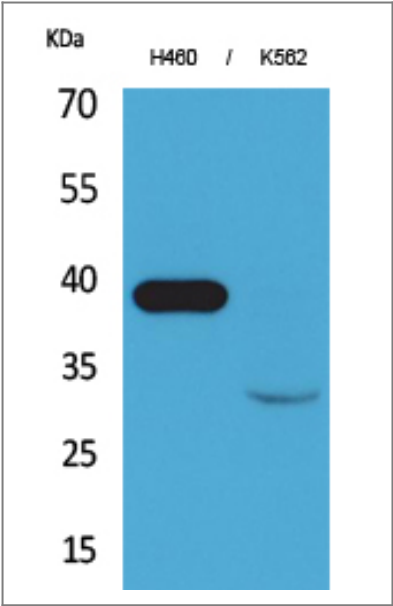
Organism	Gene ID	UniProt ID
Human	1514 ;	P07711 ;
Mouse		P06797 ;

Cellular Localization Lysosome . Apical cell membrane ; Peripheral membrane protein ; Extracellular side . Cytoplasmic vesicle, secretory vesicle, chromaffin granule . Secreted, extracellular space . Secreted . Localizes to the apical membrane of thyroid epithelial cells. Released at extracellular space by activated dendritic cells and macrophages. .; [Isoform 2]: Nucleus . Translation initiation at downstream start sites allows the synthesis of isoforms that are devoid of a signal peptide and do not transit through the endoplasmic reticulum to localize to the nucleus (PubMed:15099520). Nuclear location varies during the cell cycle, with higher levels during S phase (PubMed:15099520). .

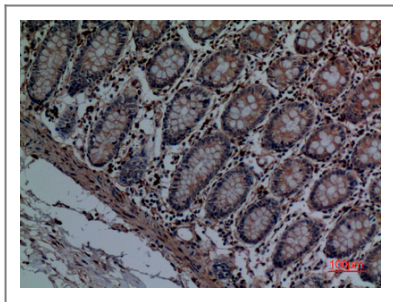
Tissue specificity Cartilage,Colon endothelium,Liver,Plasma,Prostate,

Function Catalytic activity:Specificity close to that of papain. As compared to cathepsin B, cathepsin L exhibits higher activity toward protein substrates, but has little activity on Z-Arg-Arg-NHMeC, and no peptidyl-dipeptidase activity.,Function:Important for the overall degradation of proteins in lysosomes.,similarity:Belongs to the peptidase C1 family.,subunit:Dimer of a heavy and a light chain linked by disulfide bonds.,

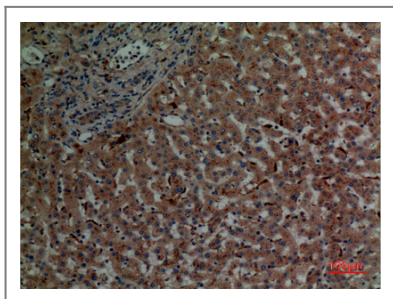
Validation Data



Western Blot analysis of H460, K562 cells using Cathepsin L Polyclonal Antibody. Secondary antibody(catalog#:RS0002) was diluted at 1:20000



Immunohistochemical analysis of paraffin-embedded human-colon, antibody was diluted at 1:100



Immunohistochemical analysis of paraffin-embedded human-liver, antibody was diluted at 1:100

Contact information

Orders: order.cn@immunoway.com
Support: support.cn@immunoway.com
Telephone: 400-8787-807(China)
Website: <http://www.immunoway.com.cn>
Address: 2200 Ringwood Ave San Jose, CA 95131 USA



Please scan the QR code to access additional product information:
Cathepsin L Rabbit pAb

For Research Use Only. Not for Use in Diagnostic Procedures.

[Antibody](#) | [ELISA Kits](#) | [Protein](#) | [Reagents](#)