

## JAM-B Rabbit pAb

CatalogNo: YT5115

### Key Features

#### Host Species

- Rabbit

#### Reactivity

- Human, Mouse, Rat

#### Applications

- WB, IHC, IF, ELISA

#### MW

- 33kD (Observed)

#### Isotype

- IgG

### Recommended Dilution Ratios

**WB 1:500-1:2000**

**IHC: 1:100-300**

**ELISA 1:20000**

**IF 1:50-200**

### Storage

#### Storage\*

-15°C to -25°C/1 year (Do not lower than -25°C)

#### Formulation

Liquid in PBS containing 50% glycerol, 0.5% BSA and 0.02% sodium azide.

### Basic Information

#### Clonality

Polyclonal

### Immunogen Information

#### Immunogen

Synthesized peptide derived from the Internal region of human JAM-B.

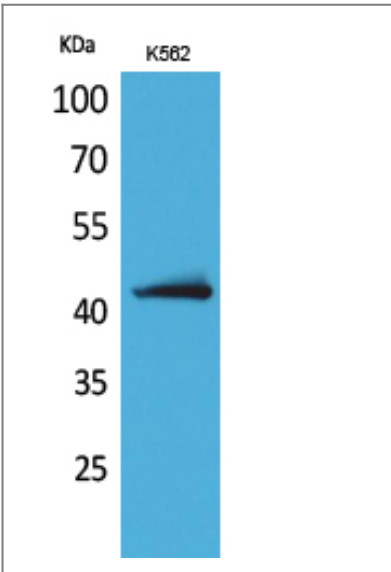
#### Specificity

JAM-B Polyclonal Antibody detects endogenous levels of JAM-B protein.

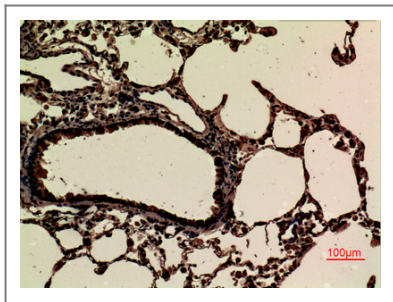
### Target Information

Gene name	JAM2		
Protein Name	Junctional adhesion molecule B		
	Organism	Gene ID	UniProt ID
	Human	<a href="#">58494</a> ;	<a href="#">P57087</a> ;
	Mouse	<a href="#">67374</a> ;	<a href="#">Q9J159</a> ;
Cellular Localization	Cell membrane ; Single-pass type I membrane protein . Cell junction . Cell junction, tight junction . Localized at tight junctions of both epithelial and endothelial cells (By similarity). Specifically localized within the somatodendritic compartment of neurons and excluded from the axon (By similarity). .		
Tissue specificity	Highly expressed in heart, placenta, lung, foreskin and lymph node (PubMed:10779521, PubMed:10945976). Prominently expressed on high endothelial venules and also present on the endothelia of other vessels (at protein level) (PubMed:10779521, PubMed:10945976). Also expressed in the brain in the caudate nuclei (PubMed:31851307).		
Function	Function:May play a role in the processes of lymphocyte homing to secondary lymphoid organs.,similarity:Belongs to the immunoglobulin superfamily.,similarity:Contains 1 Ig-like C2-type (immunoglobulin-like) domain.,similarity:Contains 1 Ig-like V-type (immunoglobulin-like) domain.,subcellular location:Localized at tight junctions of both epithelial and endothelial cells.,subunit:Interacts with JAM3.,tissue specificity:Highest expression in the heart, placenta, lung, foreskin and lymph node. Prominently expressed on high endothelial venules, also present on the endothelia of other vessels. Localized to the intercellular boundaries of high endothelial cells.,		

| Validation Data



Western Blot analysis of K562 cells using JAM-B Polyclonal Antibody. Secondary antibody(catalog#:RS0002) was diluted at 1:20000



Immunohistochemical analysis of paraffin-embedded rat-lung, antibody was diluted at 1:100

## Contact information

Orders: [order.cn@immunoway.com](mailto:order.cn@immunoway.com)  
Support: [support.cn@immunoway.com](mailto:support.cn@immunoway.com)  
Telephone: 400-8787-807(China)  
Website: <http://www.immunoway.com.cn>  
Address: 2200 Ringwood Ave San Jose, CA 95131 USA



Please scan the QR code to access additional product information:  
**JAM-B Rabbit pAb**

For Research Use Only. Not for Use in Diagnostic Procedures.

[Antibody](#) | [ELISA Kits](#) | [Protein](#) | [Reagents](#)