

RRP7A Rabbit pAb

CatalogNo: YT5113

Key Features

Host Species

- Rabbit

Reactivity

- Human, Mouse, Rat

Applications

- WB, IHC, IF, ELISA

MW

- 32kD (Observed)

Isotype

- IgG

Recommended Dilution Ratios

WB 1:500-1:2000

IHC: 1:100-300

ELISA 1:20000

IF 1:50-200

Storage

Storage*

-15°C to -25°C/1 year (Do not lower than -25°C)

Formulation

Liquid in PBS containing 50% glycerol, 0.5% BSA and 0.02% sodium azide.

Basic Information

Clonality

Polyclonal

Immunogen Information

Immunogen

Synthesized peptide derived from the C-terminal region of human RRP7A.

Specificity

RRP7A Polyclonal Antibody detects endogenous levels of RRP7A protein.

Target Information

Gene name RRP7A

Protein Name Ribosomal RNA-processing protein 7 homolog A/B

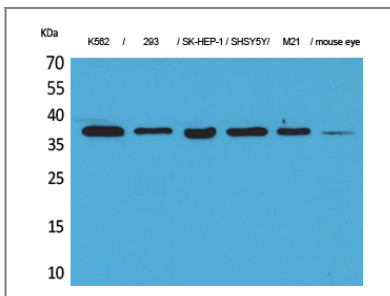
Organism	Gene ID	UniProt ID
Human	27341;	Q9Y3A4;
Mouse	74778;	Q9D1C9;

Cellular Localization Nucleus, nucleolus . Cell projection, cilium . Cytoplasm, cytoskeleton, microtubule organizing center, centrosome .

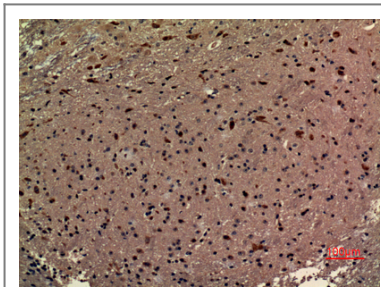
Tissue specificity Expressed in the apical radial glial cells in the developing brain.

Function Caution:Could be the product of a pseudogene.,similarity:Belongs to the RRP7 family.,similarity:Contains 1 RRM (RNA recognition motif) domain.,

Validation Data



Western Blot analysis of K562, 293, SK-HEP-1, SHSY5Y, M21, mouse eye cells using RRP7A Polyclonal Antibody. Secondary antibody(catalog#:RS0002) was diluted at 1:20000



Immunohistochemical analysis of paraffin-embedded mouse-brain, antibody was diluted at 1:100

Contact information

Orders: order.cn@immunoway.com
Support: support.cn@immunoway.com
Telephone: 400-8787-807(China)
Website: <http://www.immunoway.com.cn>
Address: 2200 Ringwood Ave San Jose, CA 95131 USA



Please scan the QR code to access additional product information:
RRP7A Rabbit pAb

