

## NTT4 Rabbit pAb

CatalogNo: YT5097

### Key Features

#### Host Species

- Rabbit

#### Reactivity

- Human, Mouse, Rat

#### Applications

- WB, ELISA

#### MW

- 81kD (Observed)

#### Isotype

- IgG

### Recommended Dilution Ratios

**WB 1:500-1:2000**

**ELISA 1:5000**

**Not yet tested in other applications.**

### Storage

#### Storage\*

-15°C to -25°C/1 year (Do not lower than -25°C)

#### Formulation

Liquid in PBS containing 50% glycerol, 0.5% BSA and 0.02% sodium azide.

### Basic Information

#### Clonality

Polyclonal

### Immunogen Information

#### Immunogen

Synthesized peptide derived from NTT4 . at AA range: 240-320

#### Specificity

NTT4 Polyclonal Antibody detects endogenous levels of NTT4 protein.

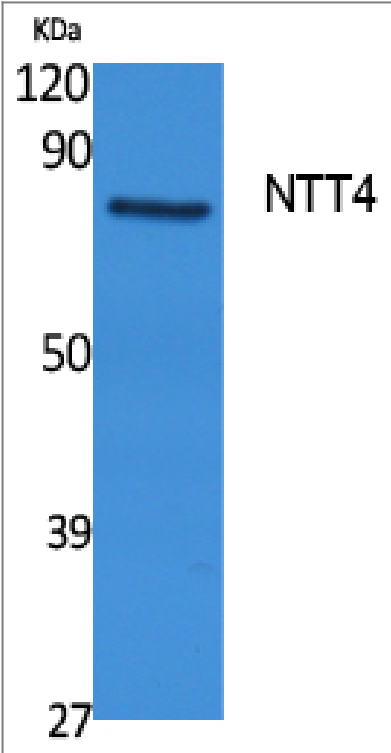
### Target Information

#### Gene name

SLC6A17

<b>Protein Name</b>	Sodium-dependent neutral amino acid transporter SLC6A17		
	<b>Organism</b>	<b>Gene ID</b>	<b>UniProt ID</b>
	Human	<a href="#">388662;</a>	<a href="#">Q9H1V8;</a>
	Mouse	<a href="#">229706;</a>	<a href="#">Q8BJI1;</a>
	Rat	<a href="#">613226;</a>	<a href="#">P31662;</a>
<b>Cellular Localization</b>	Cytoplasmic vesicle, secretory vesicle, synaptic vesicle membrane ; Multi-pass membrane protein . Cell junction, synapse, postsynapse . Cell junction, synapse, presynapse . Localizes at synaptic junctions - at both pre- and post-synaptic sites - particularly in excitatory glutamatergic terminals. .		
<b>Tissue specificity</b>	Hippocampus,		
<b>Function</b>	Function:Not yet known, orphan transporter.,similarity:Belongs to the sodium:neurotransmitter symporter (SNF) family.,		

| Validation Data



Western Blot analysis of extracts from rat stomach, using NTT4 Polyclonal Antibody. Secondary antibody(catalog#:RS0002) was diluted at 1:20000

| Contact information

Orders: order.cn@immunoway.com  
Support: support.cn@immunoway.com  
Telephone: 400-8787-807(China)  
Website: <http://www.immunoway.com.cn>  
Address: 2200 Ringwood Ave San Jose, CA 95131 USA



Please scan the QR code  
to access additional  
product information:  
**NTT4 Rabbit pAb**

---

For Research Use Only. Not for Use in Diagnostic Procedures.

[Antibody](#) | [ELISA Kits](#) | [Protein](#) | [Reagents](#)