

IL-28R α Rabbit pAb

CatalogNo: YT5089

Key Features

Host Species

- Rabbit

Reactivity

- Human, Mouse

Applications

- WB, ELISA

MW

- 57kD (Observed)

Isotype

- IgG

Recommended Dilution Ratios

WB 1:500-1:2000**ELISA 1:40000****Not yet tested in other applications.**

Storage

Storage*

-15°C to -25°C/1 year (Do not lower than -25°C)

Formulation

Liquid in PBS containing 50% glycerol, 0.5% BSA and 0.02% sodium azide.

Basic Information

Clonality

Polyclonal

Immunogen Information

ImmunogenSynthesized peptide derived from the Internal region of human IL-28R α .**Specificity**IL-28R α Polyclonal Antibody detects endogenous levels of IL-28R α protein.

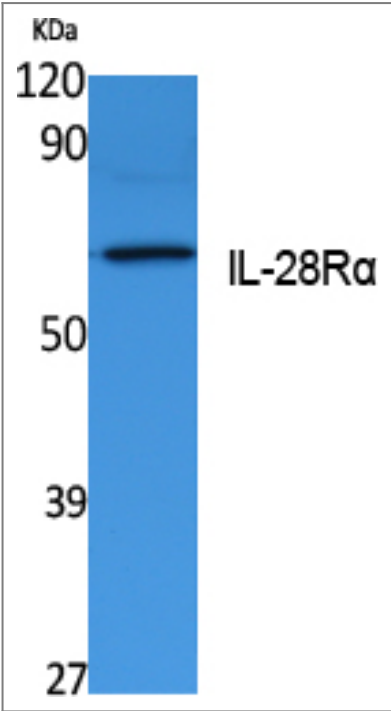
Target Information

Gene name

IL28RA

Protein Name	Interleukin-28 receptor subunit alpha		
	Organism	Gene ID	UniProt ID
	Human	163702 ;	Q8IU57 ;
	Mouse		Q8CGK5 ;
Cellular Localization	Membrane ; Single-pass type I membrane protein .		
Tissue specificity	Widely expressed.		
Function	Function:The IL28RA/IL10RB dimer is a receptor for IL28A, IL28B and IL29. The ligand/receptor complex seems to signal through the Jak-STAT pathway.,similarity:Belongs to the type II cytokine receptor family.,similarity:Contains 1 fibronectin type-III domain.,subunit:Heterodimer with IL10RB.,tissue specificity:Widely expressed.,		

| Validation Data



Western Blot analysis of extracts from K562 cells, using IL-28Rα Polyclonal Antibody. Secondary antibody(catalog#:RS0002) was diluted at 1:20000

| Contact information

Orders: order.cn@immunoway.com
Support: support.cn@immunoway.com
Telephone: 400-8787-807(China)
Website: http://www.immunoway.com.cn
Address: 2200 Ringwood Ave San Jose, CA 95131 USA



Please scan the QR code to access additional product information:
IL-28Rα Rabbit pAb

