

RhCG Rabbit pAb

CatalogNo: YT5088

Key Features

Host Species

- Rabbit

Reactivity

- Human, Mouse, Rat

Applications

- WB, IHC, IF, ELISA

MW

- 53kD (Observed)

Isotype

- IgG

Recommended Dilution Ratios

WB 1:500-1:2000

IHC: 1:100-300

ELISA 1:40000

IF 1:50-200

Storage

Storage*

-15°C to -25°C/1 year (Do not lower than -25°C)

Formulation

Liquid in PBS containing 50% glycerol, 0.5% BSA and 0.02% sodium azide.

Basic Information

Clonality

Polyclonal

Immunogen Information

Immunogen

Synthesized peptide derived from the Internal region of human RhCG.

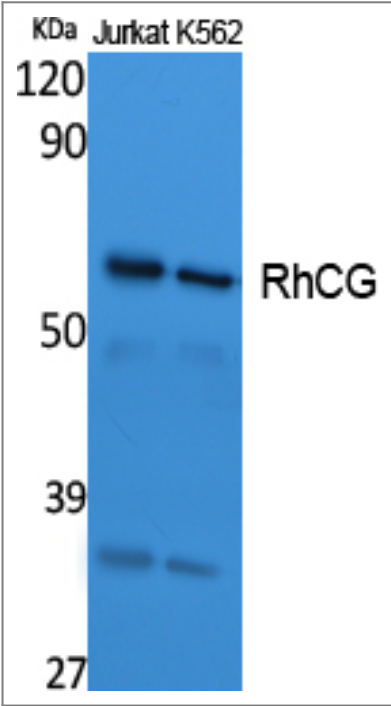
Specificity

RhCG Polyclonal Antibody detects endogenous levels of RhCG protein.

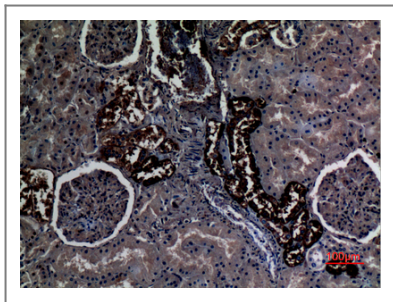
Target Information

Gene name	RHCG		
Protein Name	Ammonium transporter Rh type C		
	Organism	Gene ID	UniProt ID
	Human	51458 ;	Q9UBD6 ;
	Mouse		Q9QXP0 ;
Cellular Localization	Apical cell membrane ; Multi-pass membrane protein . Also detected at the basolateral membrane and in subapical vesicles. .		
Tissue specificity	Expressed in brain, testis, placenta, pancreas, esophagus and prostate. Expressed in squamous epithelial tissues (at protein level). According to PubMed:11062476, specifically expressed in kidney.		
Function	developmental stage:Specifically expressed in fetal kidney.,Function:Functions as an electroneutral and bidirectional ammonium transporter. May regulate transepithelial ammonia secretion.,PTM:N-glycosylated.,similarity:Belongs to the ammonium transporter (TC 2.A.49) family. Rh subfamily.,subcellular location:Also detected at the basolateral membrane and in subapical vesicles.,tissue specificity:Expressed in brain, testis, placenta, pancreas, esophagus and prostate. Expressed in squamous epithelial tissues (at protein level). Specifically expressed in kidney according to PubMed:11062476.,		

Validation Data



Western Blot analysis of extracts from Jurkat, K562 cells, using RhCG Polyclonal Antibody. Secondary antibody(catalog#:RS0002) was diluted at 1:20000



Immunohistochemical analysis of paraffin-embedded human-kidney, antibody was diluted at 1:100

Contact information

Orders: order.cn@immunoway.com
Support: support.cn@immunoway.com
Telephone: 400-8787-807(China)
Website: <http://www.immunoway.com.cn>
Address: 2200 Ringwood Ave San Jose, CA 95131 USA



Please scan the QR code
to access additional
product information:
RhCG Rabbit pAb

For Research Use Only. Not for Use in Diagnostic Procedures.

[Antibody](#) | [ELISA Kits](#) | [Protein](#) | [Reagents](#)