

V-ATPase D1 Rabbit pAb

CatalogNo: YT5026

Key Features

Host Species

- Rabbit

Reactivity

- Human, Mouse, Rat

Applications

- WB, ELISA

MW

- 40kD (Observed)

Isotype

- IgG

Storage

Storage* -15°C to -25°C/1 year (Do not lower than -25°C)

Formulation Liquid in PBS containing 50% glycerol, 0.5% BSA and 0.02% sodium azide.

Recommended Dilution Ratios

WB 1:500-1:2000

ELISA 1:20000

Not yet tested in other applications.

Basic Information

Clonality Polyclonal

Immunogen Information

Immunogen The antiserum was produced against synthesized peptide derived from human V-ATPase D1. AA range: 221-270

Specificity V-ATPase D1 Polyclonal Antibody detects endogenous levels of V-ATPase D1 protein.

Target Information

Gene name ATP6V0D1

Protein Name V-type proton ATPase subunit d 1

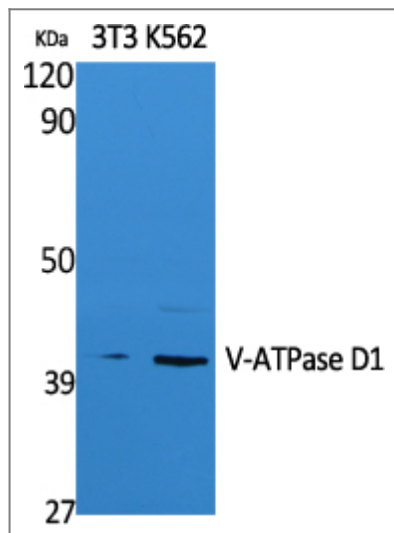
Organism	Gene ID	UniProt ID
Human	9114;	P61421;
Mouse	11972;	P51863;

Cellular Localization Membrane ; Peripheral membrane protein ; Cytoplasmic side . Lysosome membrane ; Peripheral membrane protein . Cytoplasmic vesicle, clathrin-coated vesicle membrane ; Peripheral membrane protein . Localizes to centrosome and the base of the cilium. .

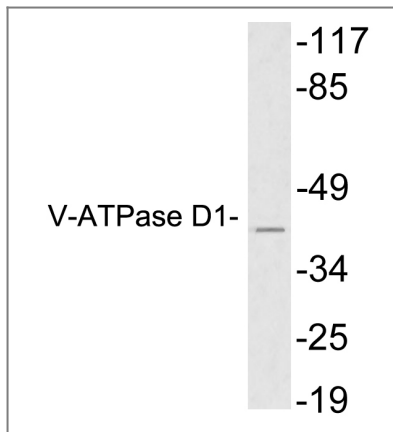
Tissue specificity Ubiquitous.

Function Function:Subunit of the integral membrane V0 complex of vacuolar ATPase. Vacuolar ATPase is responsible for acidifying a variety of intracellular compartments in eukaryotic cells, thus providing most of the energy required for transport processes in the vacuolar system. May play a role in coupling of proton transport and ATP hydrolysis.,similarity:Belongs to the V-ATPase V0D/AC39 subunit family.,subunit:V-ATPase is an heteromultimeric enzyme composed of a peripheral catalytic V1 complex (components A to H) attached to an integral membrane V0 proton pore complex (components: a, c, c', c'' and d).,tissue specificity:Ubiquitous.,

Validation Data



Western Blot analysis of extracts from NIH-3T3, K562 cells, using V-ATPase D1 Polyclonal Antibody. Secondary antibody(catalog#:RS0002) was diluted at 1:20000



Western blot analysis of lysates from HeLa cells, using V-ATPase D1 antibody.

Contact information

Orders: order.cn@immunoway.com
Support: support.cn@immunoway.com
Telephone: 400-8787-807(China)
Website: <http://www.immunoway.com.cn>
Address: 2200 Ringwood Ave San Jose, CA 95131 USA



Please scan the QR code to access additional product information:
V-ATPase D1 Rabbit pAb

For Research Use Only. Not for Use in Diagnostic Procedures.

[Antibody](#) | [ELISA Kits](#) | [Protein](#) | [Reagents](#)