

## ZP4 Rabbit pAb

CatalogNo: YT4996

### | Key Features

#### Host Species

- Rabbit

#### Reactivity

- Human,Rat

#### Applications

- WB,ELISA

#### MW

- 65kD (Observed)

#### Isotype

- IgG

### | Recommended Dilution Ratios

**WB 1:500-1:2000**

**ELISA 1:10000**

**Not yet tested in other applications.**

### | Storage

#### Storage\*

-15°C to -25°C/1 year(Do not lower than -25°C)

#### Formulation

Liquid in PBS containing 50% glycerol, 0.5% BSA and 0.02% sodium azide.

### | Basic Information

#### Clonality

Polyclonal

### | Immunogen Information

#### Immunogen

The antiserum was produced against synthesized peptide derived from human ZP4. AA range:231-280

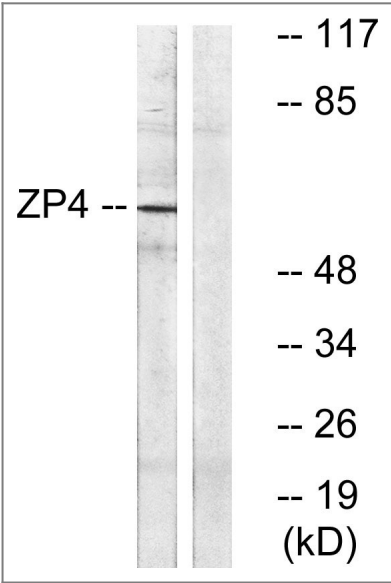
#### Specificity

ZP4 Polyclonal Antibody detects endogenous levels of ZP4 protein.

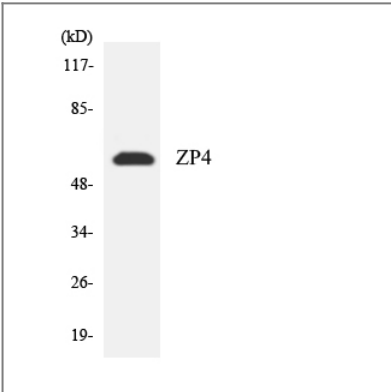
### | Target Information

Gene name	ZP4		
Protein Name	Zona pellucida sperm-binding protein 4		
	Organism	Gene ID	UniProt ID
	Human	<a href="#">57829</a> ;	<a href="#">Q12836</a> ;
Cellular Localization	[Processed zona pellucida sperm-binding protein 4]: Zona pellucida .; Cell membrane ; Single-pass type I membrane protein .		
Tissue specificity	Expressed in oocytes.		
Function	Domain:The ZP domain is involved in the polymerization of the ZP proteins to form the zona pellucida.,Function:The mammalian zona pellucida, which mediates species-specific sperm binding, induction of the acrosome reaction and prevents post-fertilization polyspermy, is composed of three to four glycoproteins, ZP1, ZP2, ZP3, and ZP4. ZP4 may act as a sperm receptor.,PTM:Proteolytically cleaved before the transmembrane segment to yield the secreted ectodomain incorporated in the zona pellucida.,similarity:Belongs to the ZP domain family. ZPB subfamily.,similarity:Contains 1 P-type (trefoil) domain.,similarity:Contains 1 ZP domain.,tissue specificity:Oocytes.,		

Validation Data



Western blot analysis of lysates from Jurkat cells, using ZP4 Antibody. The lane on the right is blocked with the synthesized peptide.



Western blot analysis of the lysates from HepG2 cells using ZP4 antibody.

## | Contact information

Orders: order.cn@immunoway.com  
Support: support.cn@immunoway.com  
Telephone: 400-8787-807(China)  
Website: <http://www.immunoway.com.cn>  
Address: 2200 Ringwood Ave San Jose, CA 95131 USA



Please scan the QR code  
to access additional  
product information:  
**ZP4 Rabbit pAb**

---

For Research Use Only. Not for Use in Diagnostic Procedures.

[Antibody](#) | [ELISA Kits](#) | [Protein](#) | [Reagents](#)