

ZNF76 Rabbit pAb

CatalogNo: YT4982

Orthogonal Validated 

Key Features

Host Species

- Rabbit

Reactivity

- Human,Rat,Mouse,

Applications

- IHC,IF,ELISA

MW

- 62kD (Calculated)

Isotype

- IgG

Recommended Dilution Ratios

IHC 1:100-1:300

ELISA 1:10000

IF 1:50-200

Storage

Storage* -15°C to -25°C/1 year(Do not lower than -25°C)**Formulation** Liquid in PBS containing 50% glycerol, 0.5% BSA and 0.02% sodium azide.

Basic Information

Clonality Polyclonal

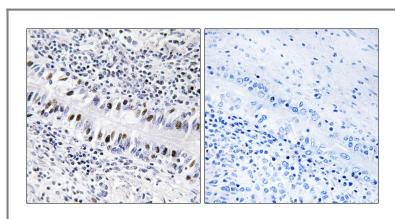
Immunogen Information

Immunogen The antiserum was produced against synthesized peptide derived from human ZNF76. AA range:116-165**Specificity** ZNF76 Polyclonal Antibody detects endogenous levels of ZNF76 protein.

Target Information

Gene name	ZNF76		
Protein Name	Zinc finger protein 76		
	Organism	Gene ID	UniProt ID
	Human	7629 ;	P36508 ;
	Mouse		Q8BMU0 ;
Cellular Localization	Nucleus .		
Tissue specificity	Testis.		
Function	Function:May be involved in transcriptional regulation.,similarity:Belongs to the krueppel C2H2-type zinc-finger protein family.,similarity:Contains 7 C2H2-type zinc fingers.,tissue specificity:Testis.,		

Validation Data



Immunohistochemistry analysis of paraffin-embedded human lung carcinoma, using ZNF76 Antibody. The picture on the right is blocked with the synthesized peptide.

Contact information

Orders: order.cn@immunoway.com
 Support: support.cn@immunoway.com
 Telephone: 400-8787-807(China)
 Website: <http://www.immunoway.com.cn>
 Address: 2200 Ringwood Ave San Jose, CA 95131 USA



Please scan the QR code to access additional product information:
ZNF76 Rabbit pAb

For Research Use Only. Not for Use in Diagnostic Procedures.

[Antibody](#) | [ELISA Kits](#) | [Protein](#) | [Reagents](#)