

## ZIS Rabbit pAb

CatalogNo: YT4952

### | Key Features

#### Host Species

- Rabbit

#### Reactivity

- Human, Mouse, Rat

#### Applications

- WB, IHC, IF, ELISA

#### MW

- 34kD (Observed)

#### Isotype

- IgG

### | Recommended Dilution Ratios

**WB 1:500-1:2000**

**IHC 1:100-1:300**

**IF 1:200-1:1000**

**ELISA 1:10000**

**Not yet tested in other applications.**

### | Storage

**Storage\*** -15°C to -25°C/1 year(Do not lower than -25°C)

**Formulation** Liquid in PBS containing 50% glycerol, 0.5% BSA and 0.02% sodium azide.

### | Basic Information

**Clonality** Polyclonal

### | Immunogen Information

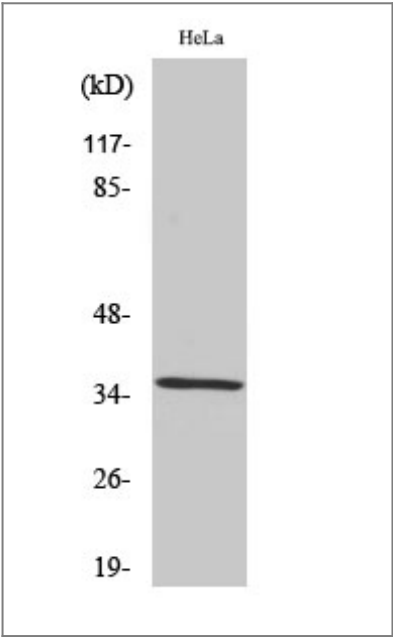
**Immunogen** The antiserum was produced against synthesized peptide derived from human ZNF265. AA range:106-155

**Specificity** ZIS Polyclonal Antibody detects endogenous levels of ZIS protein.

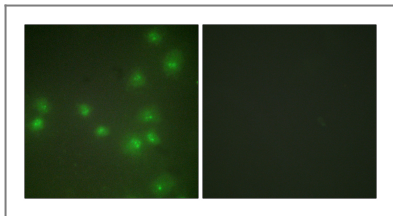
## Target Information

Gene name	ZRANB2		
Protein Name	Zinc finger Ran-binding domain-containing protein 2		
	Organism	Gene ID	UniProt ID
	Human	<a href="#">9406</a> ;	<a href="#">Q95218</a> ;
	Mouse	<a href="#">53861</a> ;	<a href="#">Q9R020</a> ;
	Rat	<a href="#">58821</a> ;	<a href="#">Q35986</a> ;
Cellular Localization	Nucleus .		
Tissue specificity	Brain,Epithelium,Fetal brain,Fetal kidney,Liver,Skin,Testis,Uterus,		
Function	Domain:The RanBP2-type zinc fingers mediate binding to RNA.,Function:Splice factor required for alternative splicing of TRA2B/SFRS10 transcripts. May interfere with constitutive 5'-splice site selection.,PTM:Isoform 2 is phosphorylated on Ser-310 upon DNA damage, probably by ATM or ATR.,sequence Caution:Intron retention.,similarity:Belongs to the ZRANB2 family.,similarity:Contains 2 RanBP2-type zinc fingers.,subunit:Interacts with the C-terminal half of SNRNP70, the Arg/Ser-rich domain of XE7 as well as with U2AF1 and CLK1.,		

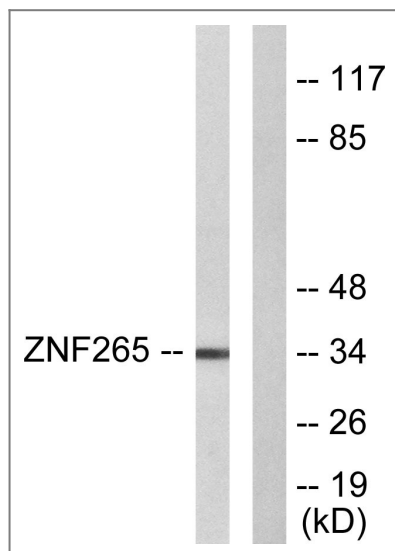
## Validation Data



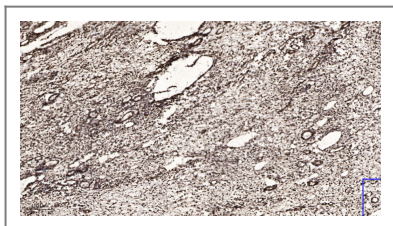
Western Blot analysis of various cells using ZIS Polyclonal Antibody. Secondary antibody(catalog#:RS0002) was diluted at 1:20000 cells nucleus extracted by Minute TM Cytoplasmic and Nuclear Fractionation kit (SC-003,Inventbiotech,MN,USA).



Immunofluorescence analysis of HUVEC cells, using ZNF265 Antibody. The picture on the right is blocked with the synthesized peptide.



Western blot analysis of lysates from HeLa cells, using ZNF265 Antibody. The lane on the right is blocked with the synthesized peptide.



Immunohistochemical analysis of paraffin-embedded human oophoroma. 1, Antibody was diluted at 1:200(4° overnight). 2, Tris-EDTA,pH9.0 was used for antigen retrieval. 3,Secondary antibody was diluted at 1:200(room temperature, 45min).

## Contact information

Orders: [order.cn@immunoway.com](mailto:order.cn@immunoway.com)  
 Support: [support.cn@immunoway.com](mailto:support.cn@immunoway.com)  
 Telephone: 400-8787-807(China)  
 Website: <http://www.immunoway.com.cn>  
 Address: 2200 Ringwood Ave San Jose, CA 95131 USA



Please scan the QR code  
to access additional  
product information:  
**ZIS Rabbit pAb**

For Research Use Only. Not for Use in Diagnostic Procedures.

[Antibody](#) | [ELISA Kits](#) | [Protein](#) | [Reagents](#)