

## XE7 Rabbit pAb

CatalogNo: YT4912

### Key Features

#### Host Species

- Rabbit

#### Reactivity

- Human

#### Applications

- WB, ELISA

#### MW

- 80kD (Observed)

#### Isotype

- IgG

### Recommended Dilution Ratios

**WB 1:500-1:2000**

**ELISA 1:40000**

**Not yet tested in other applications.**

### Storage

#### Storage\*

-15°C to -25°C/1 year (Do not lower than -25°C)

#### Formulation

Liquid in PBS containing 50% glycerol, 0.5% BSA and 0.02% sodium azide.

### Basic Information

#### Clonality

Polyclonal

### Immunogen Information

#### Immunogen

Synthesized peptide derived from XE7 . at AA range: 590-670

#### Specificity

XE7 Polyclonal Antibody detects endogenous levels of XE7 protein.

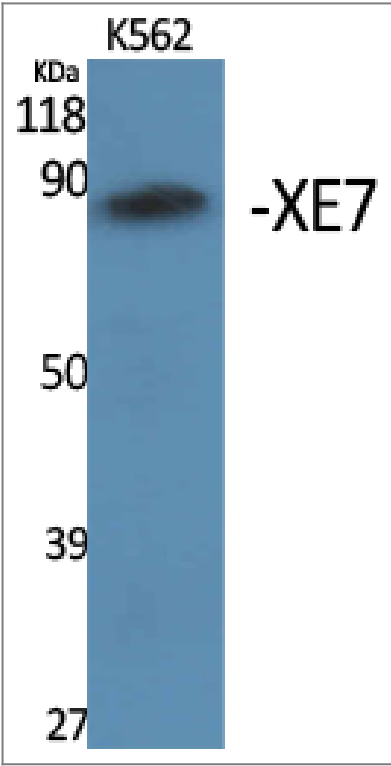
### Target Information

#### Gene name

AKAP17A

Protein Name	A-kinase anchor protein 17A		
	Organism	Gene ID	UniProt ID
	Human	<a href="#">8227;</a>	<a href="#">Q02040;</a>
Cellular Localization	Nucleus speckle .		
Tissue specificity	Widely expressed. Found in heart, brain, lung, liver, skeletal muscle, kidney and pancreas. Expressed in activated B-cells and placenta. Expressed in all cell lines tested including Jurkat-TAg, U-937 and HEK293 cells.		
Function	Caution:Was originally (PubMed:1438229) thought to be a cell surface protein involved in B-cell activation.,Function:Splice factor regulating alternative splice site selection for certain mRNA precursors.,miscellaneous:The gene encoding for this protein is located in the pseudoautosomal region 1 (PAR1) of X and Y chromosomes.,similarity:Contains 1 RRM (RNA recognition motif) domain.,subunit:Monomer. Component of the spliceosome. Interacts with ZRANB2 and SFRS1/ASF through its Arg/Ser-rich domain.,tissue specificity:Widely expressed. Found in heart, brain, lung, liver, skeletal muscle, kidney and pancreas. Expressed in activated B-cells and placenta.,		

## Validation Data



Western Blot analysis of various cells using XE7 Polyclonal Antibody. Secondary antibody(catalog#:RS0002) was diluted at 1:20000 cells nucleus extracted by Minute TM Cytoplasmic and Nuclear Fractionation kit (SC-003,Inventbiotech,MN,USA).

## Contact information

Orders: order.cn@immunoway.com  
Support: support.cn@immunoway.com  
Telephone: 400-8787-807(China)  
Website: <http://www.immunoway.com.cn>  
Address: 2200 Ringwood Ave San Jose, CA 95131 USA



Please scan the QR code  
to access additional  
product information:  
**XE7 Rabbit pAb**

---

For Research Use Only. Not for Use in Diagnostic Procedures.

[Antibody](#) | [ELISA Kits](#) | [Protein](#) | [Reagents](#)