

## WTAP Rabbit pAb

CatalogNo: YT4908

### Key Features

#### Host Species

- Rabbit

#### Reactivity

- Human, Mouse

#### Applications

- WB, IHC, IF, ELISA

#### MW

- 55kD (Observed)

#### Isotype

- IgG

### Recommended Dilution Ratios

**WB 1:500-1:2000**

**IHC 1:100-1:300**

**ELISA 1:20000**

**IF 1:50-200**

### Storage

#### Storage\*

-15°C to -25°C/1 year (Do not lower than -25°C)

#### Formulation

Liquid in PBS containing 50% glycerol, 0.5% BSA and 0.02% sodium azide.

### Basic Information

#### Clonality

Polyclonal

### Immunogen Information

#### Immunogen

The antiserum was produced against synthesized peptide derived from human WTAP. AA range: 321-370

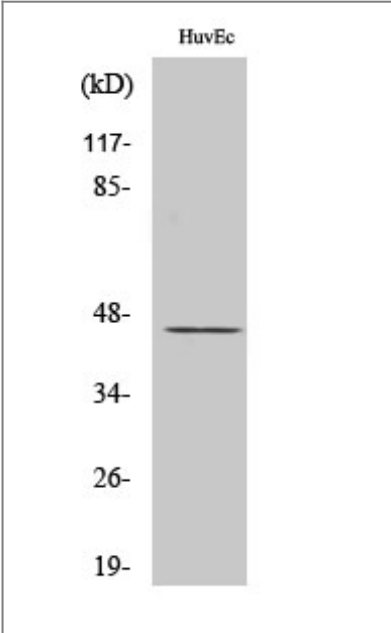
#### Specificity

WTAP Polyclonal Antibody detects endogenous levels of WTAP protein.

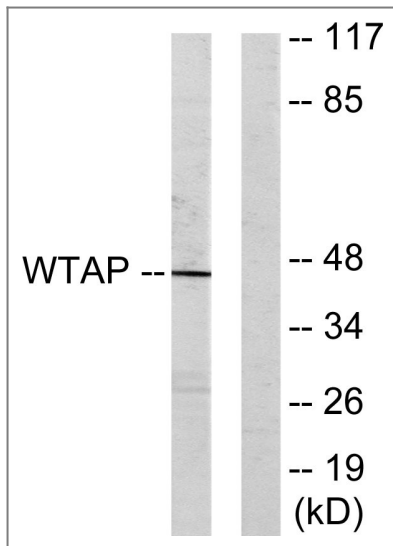
### Target Information

Gene name	WTAP		
Protein Name	Pre-mRNA-splicing regulator WTAP		
	Organism	Gene ID	UniProt ID
	Human	<a href="#">9589;</a>	<a href="#">Q15007;</a>
	Mouse	<a href="#">60532;</a>	<a href="#">Q9ER69;</a>
Cellular Localization	Nucleus speckle . Nucleus, nucleoplasm . Cytoplasm . Mainly nuclear with some fraction located in the cytoplasm. ZC3H13 is required to anchor component of the MACOM subcomplex, such as VIRMA, in the nucleus. .		
Tissue specificity	Ubiquitously expressed.		
Function	Function:Regulates G2/M cell-cycle transition by binding to the 3' UTR of CCNA2, which enhances its stability. Impairs WT1 DNA-binding ability and inhibits expression of WT1 target genes. May be involved in mRNA splicing regulation.,induction:In smooth muscle cells, up-regulated after serum withdrawal, when cells become mature and non proliferative.,PTM:Phosphorylated upon DNA damage, probably by ATM or ATR.,similarity:Belongs to the fl(2)d family.,subunit:Interacts with WT1.,tissue specificity:Ubiquitously expressed.,		

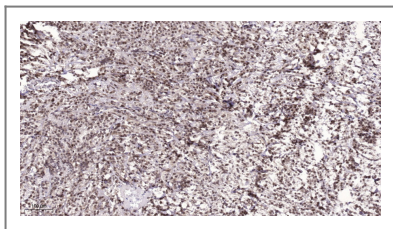
| Validation Data



Western Blot analysis of various cells using WTAP Polyclonal Antibody diluted at 1:500. Secondary antibody(catalog#:RS0002) was diluted at 1:20000 cells nucleus extracted by Minute TM Cytoplasmic and Nuclear Fractionation kit (SC-003,Inventbiotech,MN,USA).



Western blot analysis of lysates from HUVEC cells, using WTAP Antibody. The lane on the right is blocked with the synthesized peptide.



Immunohistochemical analysis of paraffin-embedded human Colon cancer. 1, Antibody was diluted at 1:200(4° overnight). 2, Tris-EDTA,pH9.0 was used for antigen retrieval. 3,Secondary antibody was diluted at 1:200(room temperature, 45min).

## Contact information

Orders: order.cn@immunoway.com  
 Support: support.cn@immunoway.com  
 Telephone: 400-8787-807(China)  
 Website: <http://www.immunoway.com.cn>  
 Address: 2200 Ringwood Ave San Jose, CA 95131 USA



Please scan the QR code to access additional product information:  
**WTAP Rabbit pAb**

For Research Use Only. Not for Use in Diagnostic Procedures.

[Antibody](#) | [ELISA Kits](#) | [Protein](#) | [Reagents](#)