

WAVE2 Rabbit pAb

CatalogNo: YT4898 **Orthogonal Validated** 

Key Features

Host Species

- Rabbit

Reactivity

- Human, Mouse, Rat

Applications

- WB, IHC, IF, ELISA

MW

- 55kD (Observed)

Isotype

- IgG

Storage

Storage* -15°C to -25°C/1 year (Do not lower than -25°C)

Formulation Liquid in PBS containing 50% glycerol, 0.5% BSA and 0.02% sodium azide.

Recommended Dilution Ratios

WB 1:500-1:2000

IHC 1:100-1:300

ELISA 1:5000

IF 1:50-200

Basic Information

Clonality Polyclonal

Immunogen Information

Immunogen The antiserum was produced against synthesized peptide derived from human WASF2. AA range:141-190

Specificity WAVE2 Polyclonal Antibody detects endogenous levels of WAVE2 protein.

Target Information

Gene name WASF2

Protein Name Wiskott-Aldrich syndrome protein family member 2

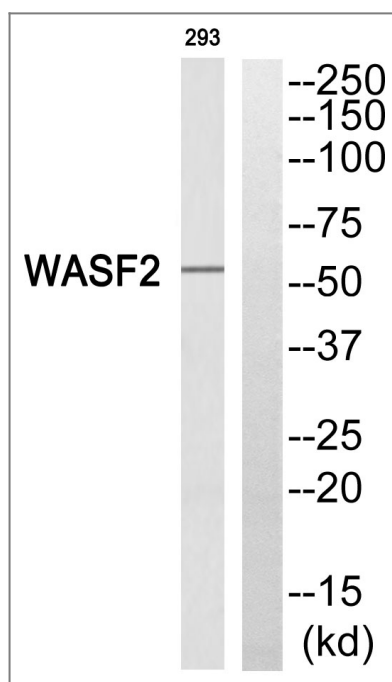
Organism	Gene ID	UniProt ID
Human	10163 ;	Q9Y6W5 ;
Mouse	242687 ;	Q8BH43 ;

Cellular Localization Cytoplasm, cytoskeleton . Cell projection, lamellipodium . Basolateral cell membrane . At the interface between the lamellipodial actin meshwork and the membrane. .

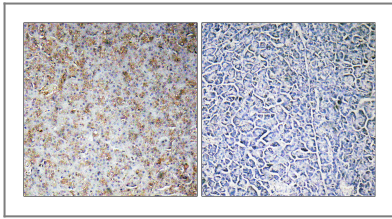
Tissue specificity Expressed in all tissues with strongest expression in placenta, lung, and peripheral blood leukocytes, but not in skeletal muscle.

Function Domain: Binds the Arp2/3 complex through the C-terminal region and actin through verprolin homology (VPH) domain. Function: Downstream effector molecules involved in the transmission of signals from tyrosine kinase receptors and small GTPases to the actin cytoskeleton. Similarity: Belongs to the SCAR/WAVE family. Similarity: Contains 1 WH2 domain. Subcellular location: At the interface between the lamellipodial actin meshwork and the membrane. Subunit: Binds actin and the Arp2/3 complex. Interacts with BAIAP2. Component of the WAVE2 complex composed of ABI1, CYFIP1/SRA1, NCKAP1/NAP1 and WASF2/WAVE2. Directly interacts with C3orf10/HSPC300. Tissue specificity: Expressed in all tissues with strongest expression in placenta, lung, and peripheral blood leukocytes, but not in skeletal muscle.

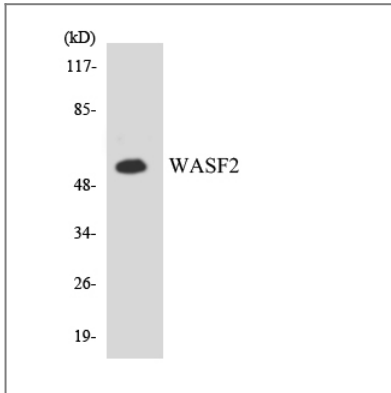
Validation Data



Western blot analysis of WASF2 Antibody. The lane on the right is blocked with the WASF2 peptide.



Immunohistochemistry analysis of paraffin-embedded human pancreas, using WASF2 Antibody. The lane on the right is blocked with the WASF2 peptide.



Western blot analysis of the lysates from K562 cells using WASF2 antibody.

Contact information

Orders: order.cn@immunoway.com
Support: support.cn@immunoway.com
Telephone: 400-8787-807(China)
Website: <http://www.immunoway.com.cn>
Address: 2200 Ringwood Ave San Jose, CA 95131 USA



Please scan the QR code to access additional product information:
WAVE2 Rabbit pAb

For Research Use Only. Not for Use in Diagnostic Procedures.

[Antibody](#) | [ELISA Kits](#) | [Protein](#) | [Reagents](#)